

# Your Global Partner in Engineering Excellence for Offshore Energy Solutions





*Explore Our Capabilities, Discover Your Possibilities*



Subsea Innovation Ltd  
is part of Unique Group LLC



Unique Group



# Global Subsea Technology + Engineering Innovator



- Founded in 1993 in the Sharjah, UAE
- Over 650 plus people worldwide, including 200+ engineering specialists
- Located in 18 locations worldwide, serving customers across the Middle East, Asia Pacific, Africa, Americas and Europe
- Features R&D Development Centers in Middle East & Europe aiming to enhance safety, efficiency, and sustainability in the subsea and energy sector
- Vast stock and product portfolio available for both sale & rental

## Our Product & Service Portfolio features:

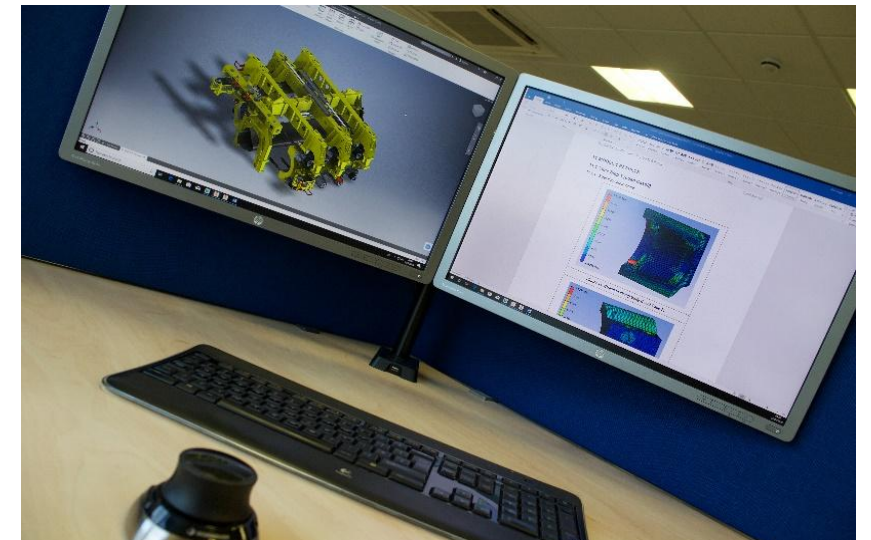
- Unmanned Survey Vessels
- Survey Equipment
- Diving + Life Support
- Lifting + Mooring
- Buoyancy + Water Weights
- Subsea Engineering
- Mission Equipment



# Introduction

## Overview

- Providing Engineering support on a Consultancy bases or as a Solutions Provider.
- We offer a turnkey solution in the Oil and Gas and Energy Sectors.
- Specialist in the design & build of bespoke equipment.
- In-house team of skilled Engineers and Technicians.
  - Design
  - Analysis
  - Project management and execution
  - Offshore support team
- Comprehensive track record in the offshore Oil and Gas and Energy Sectors
- Established over 40 Years ago.
- In Excess of 500 Design & Build Projects Delivered
- 150+ Launch & Recovery Systems (LARS) Supplied
- Global Client Base





## Overview

- Purpose built Office / Workshop opened in November 2014 (on 5 acre site in Darlington NE UK)
- Total of 42,000 sq ft floor space
- 60Te Crane capacity (2 x 25Te twin hoists in high bay)
- 12m x 8m door opening
- 5m x 5m x 5m floodable test pit (120te pad eyes)
- Onsite testing and commissioning (mechanical , hydraulic and electric)
- Machining center @ small fabrications.
- PU Moulding in house
- HNBR compression molding
- 40,000 sq ft external storage yard
- Internal & External storage





# Introduction

## Client Base





## Engineering Consultancy

- Pre feed
- Feed
- Dynamic analysis
- Local Analysis
- CFD
- Installation analysis

## Subsea Products / Projects

- J tube seals
- Sealing Hang off clamps
- Water-stop seals
- Environmental plugs
- Tie back clamps
- Recovery clamps
- Special Projects

## Mission Equipment

- Handling equipment
- LARS systems
- Winches
- Skidding systems
- PLET handling systems
- Moon Pool Towers
- Special Projects

## EPRS solutions

- Sealing clamps
- Structural clamps
- Connectors
- Sleeve connectors
- Hot Taps Ts

## Renewables

- CPS bandage system
- Retro fit Dynamics
- As built analysis
- Special Projects

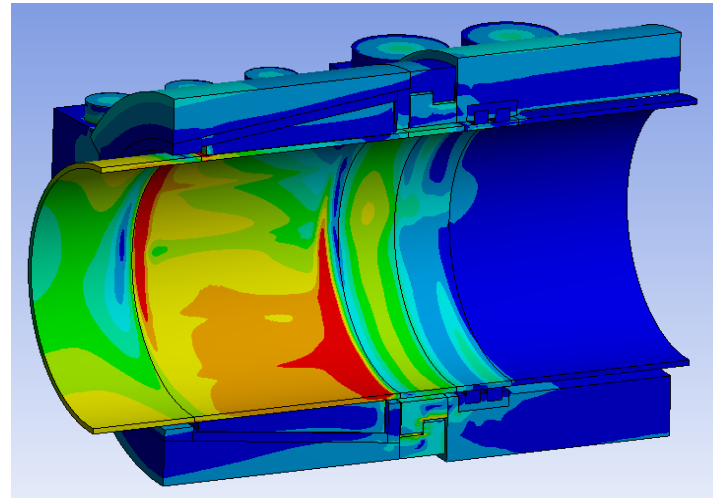




# Consultancy and Engineering support

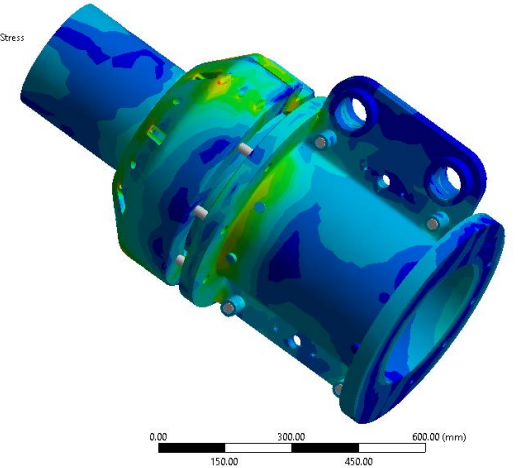
## Range of Services

- 3<sup>rd</sup> Party review
- Conceptual Engineering Design
- Project Engineering / Management support
- Inspection
- Testing



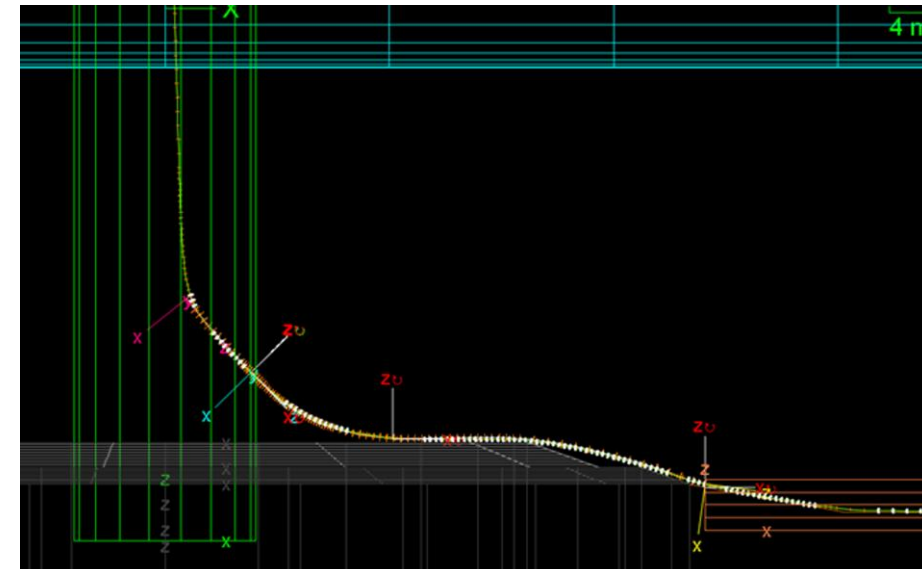
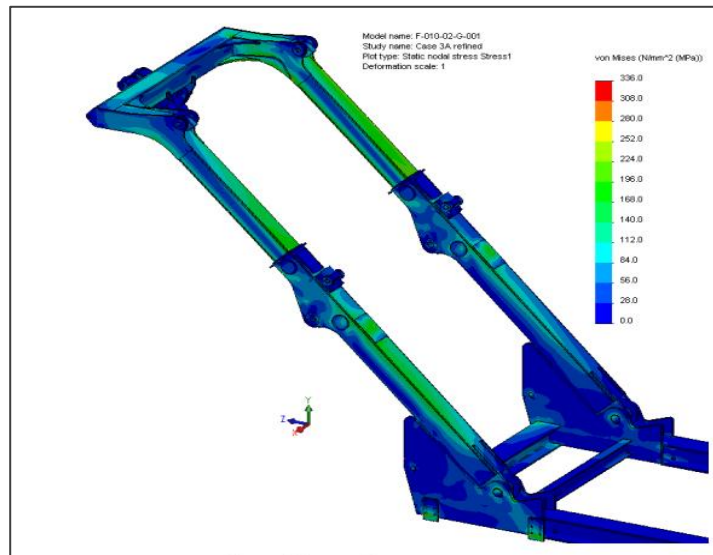
D: Static Structural  
Equivalent Stress  
Type: Equivalent (von-Mises) Stress  
Unit: MPa  
Time: 1  
07/06/2022 13:34

825.94 Max  
350  
300  
250  
200  
150  
100  
75  
50  
40  
30  
20  
10  
5  
0.13376 Min



## Range of Disciplines

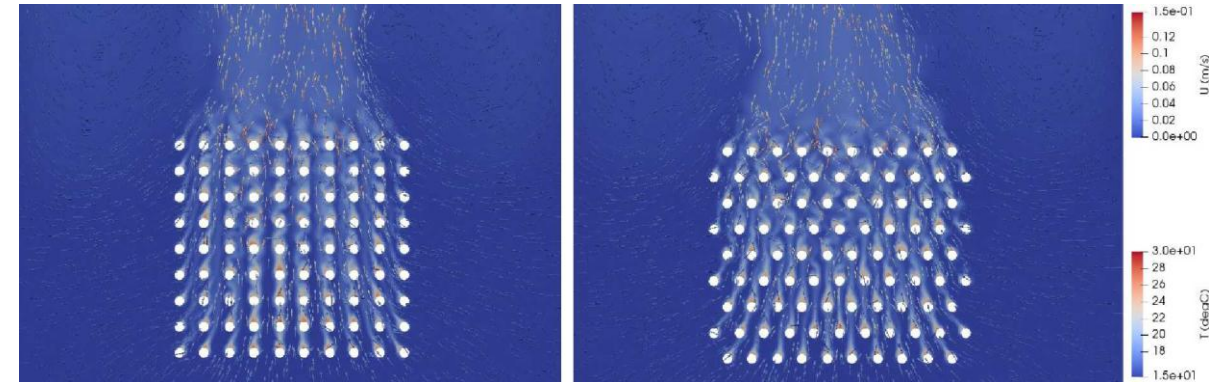
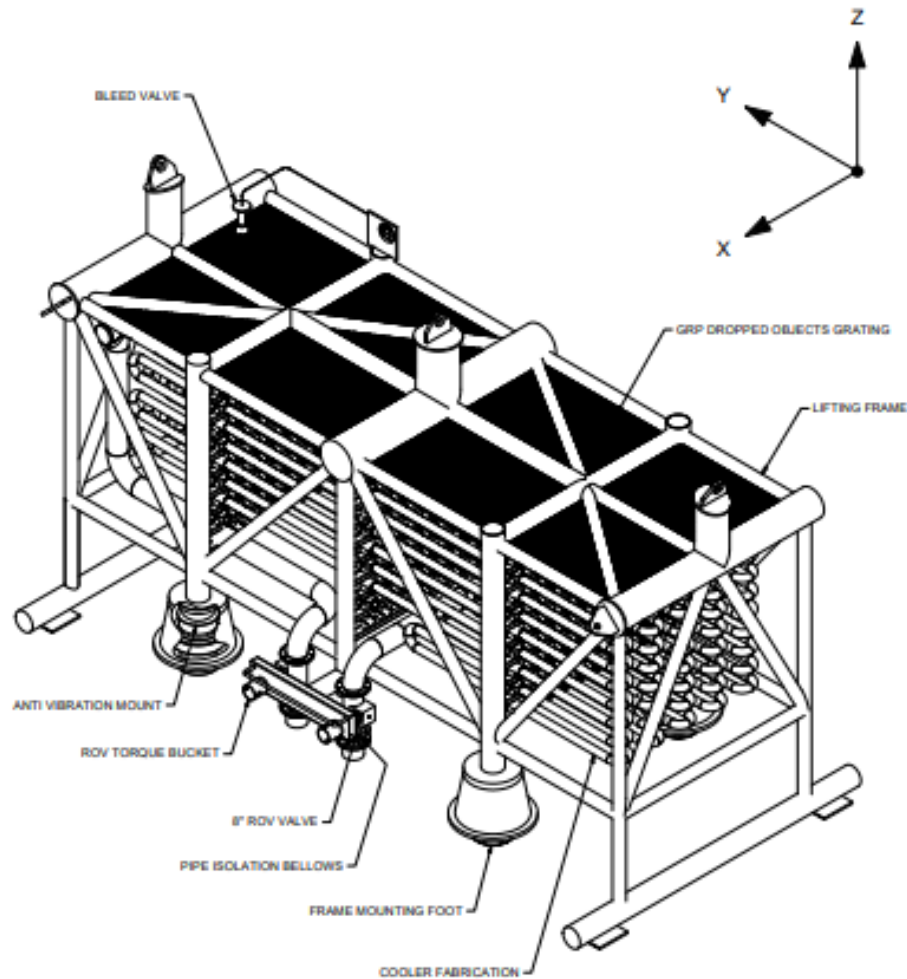
- Design Engineers
- Analysts
- CAD Technicians
- Project Managers
- Project Engineers
- Service Technicians





# Consultancy Example

## Removable subsea cooler concept design



- ROV Isolation and decouple of fluid connections
- ROV operated structural connection
- Vibration damping pads
- CFD and classic calculations re cooling capacity
- Removal and recovery sequence development

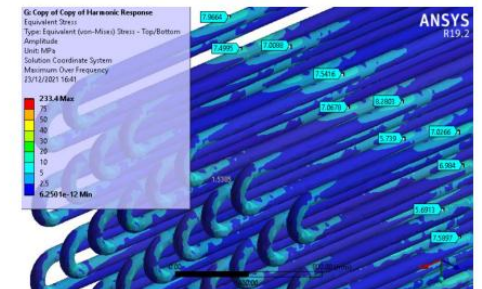


Figure 37 - Copper Pipework Stress (Load Case 3, With AV Mounts)

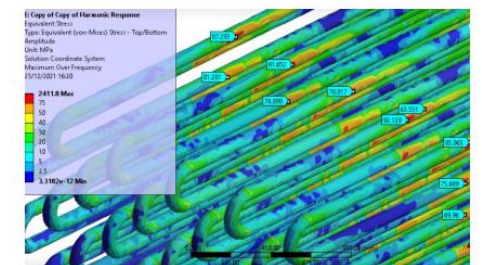
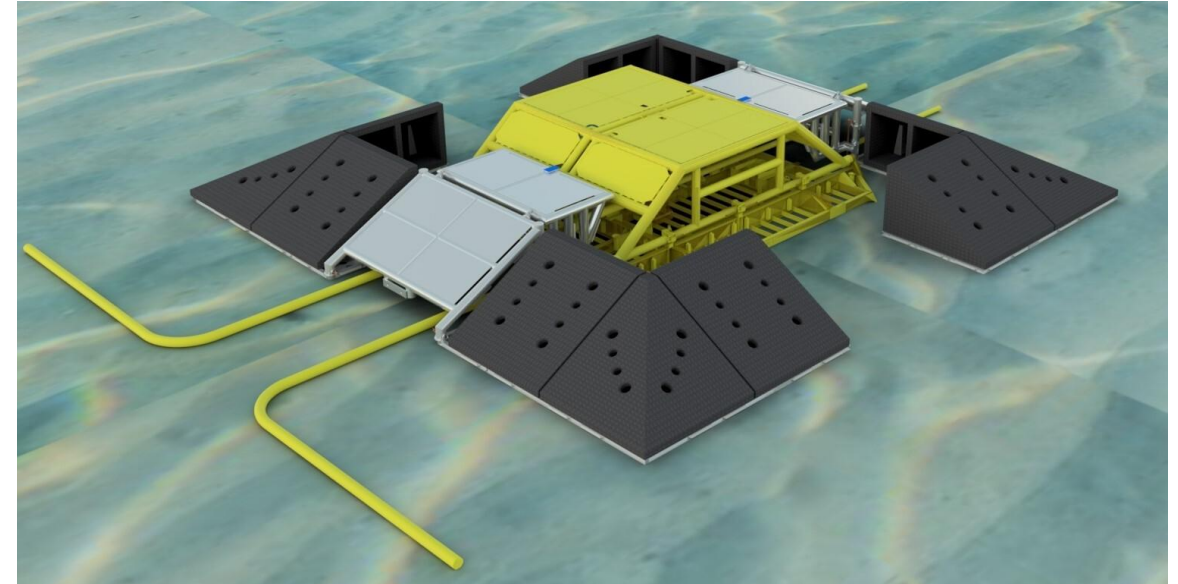
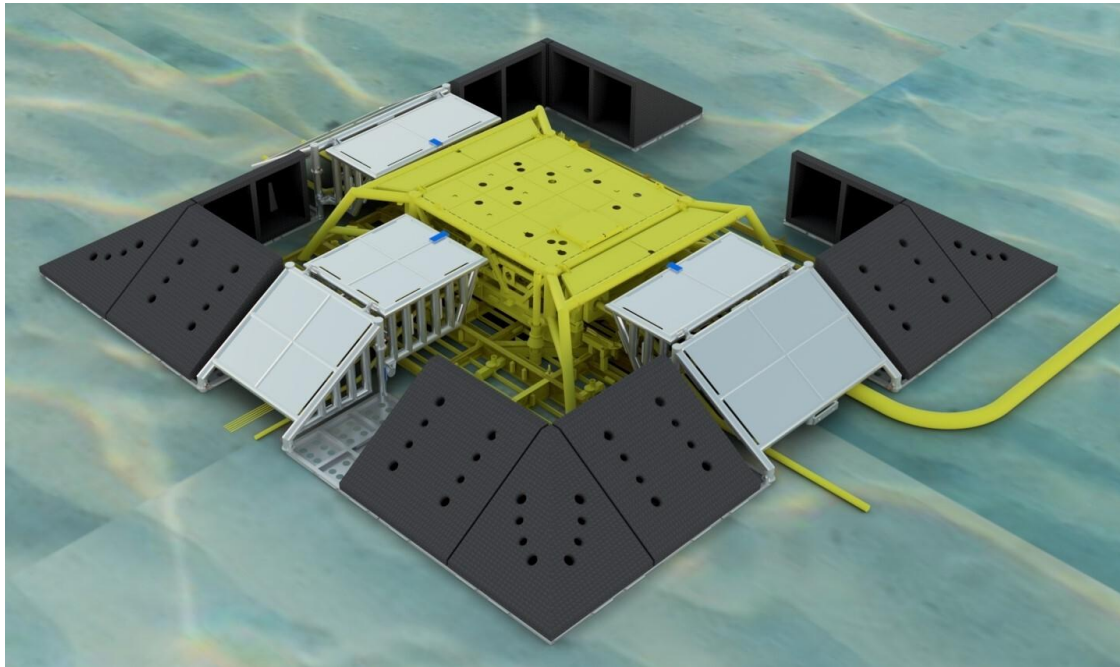


Figure 38 - Copper Pipework Stress (Load Case 3, Without AV Mounts)

# Consultancy Example

## Subsea Protection Frames



- Design of structure
- Lifting analysis and rigging design for installation
- Impact analysis



# Subsea - Hang off clamps

## Range of systems

- Structural and sealing systems
- Steel Catenary Risers
- Flexible flow lines
- Umbilical's
- Power Cables

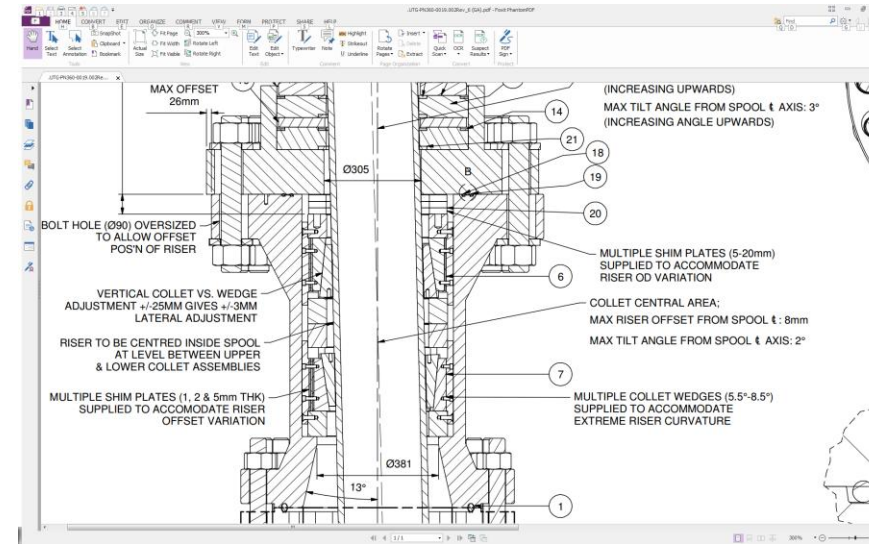


Figure 5-1 - Installed HOC

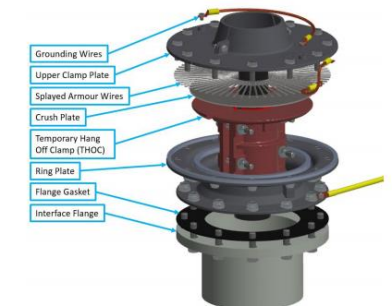
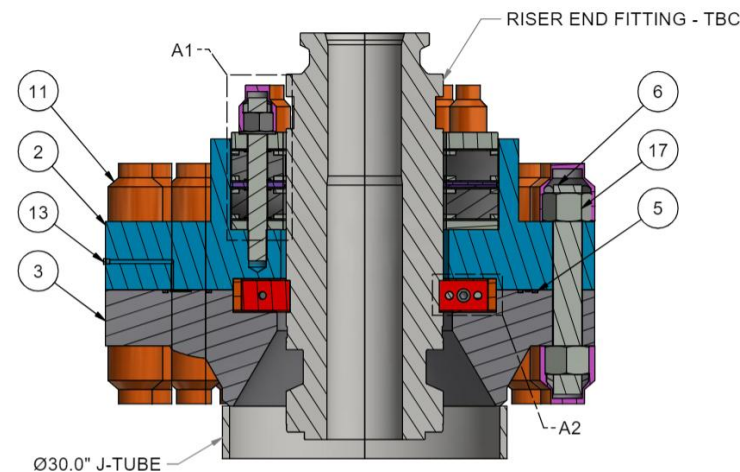
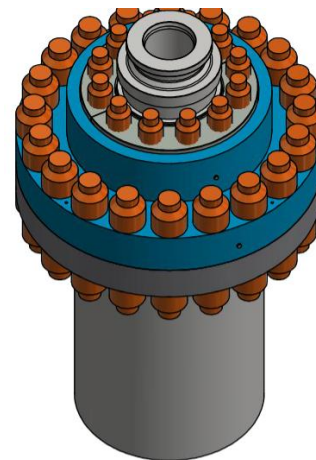
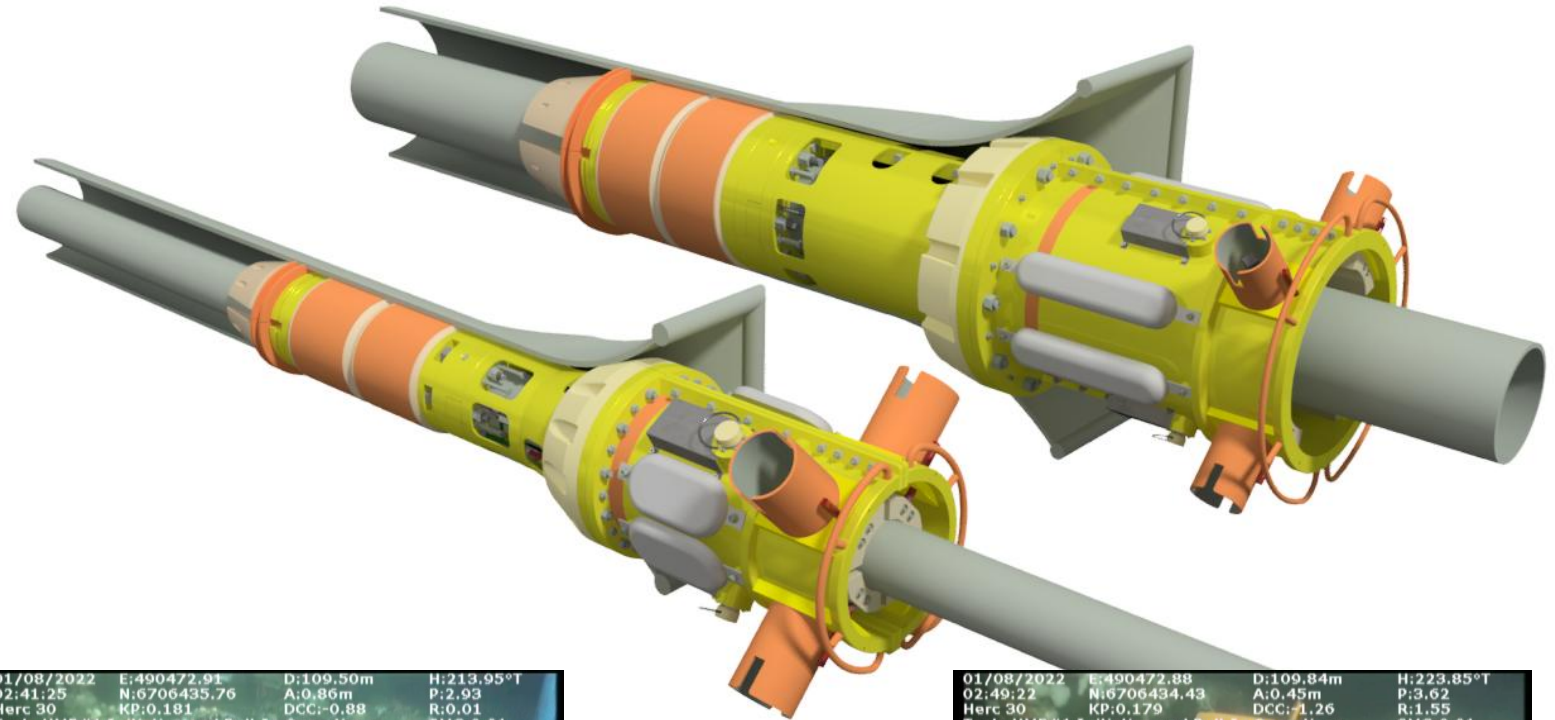


Figure 5-2 - Exploded HOC View



# Subsea – Active J Tube Seals

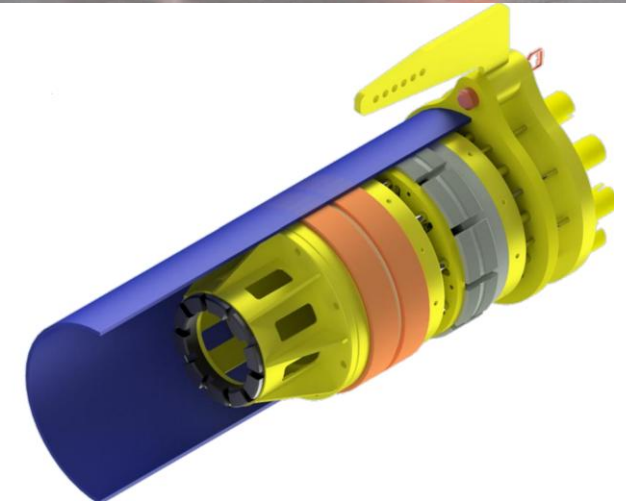
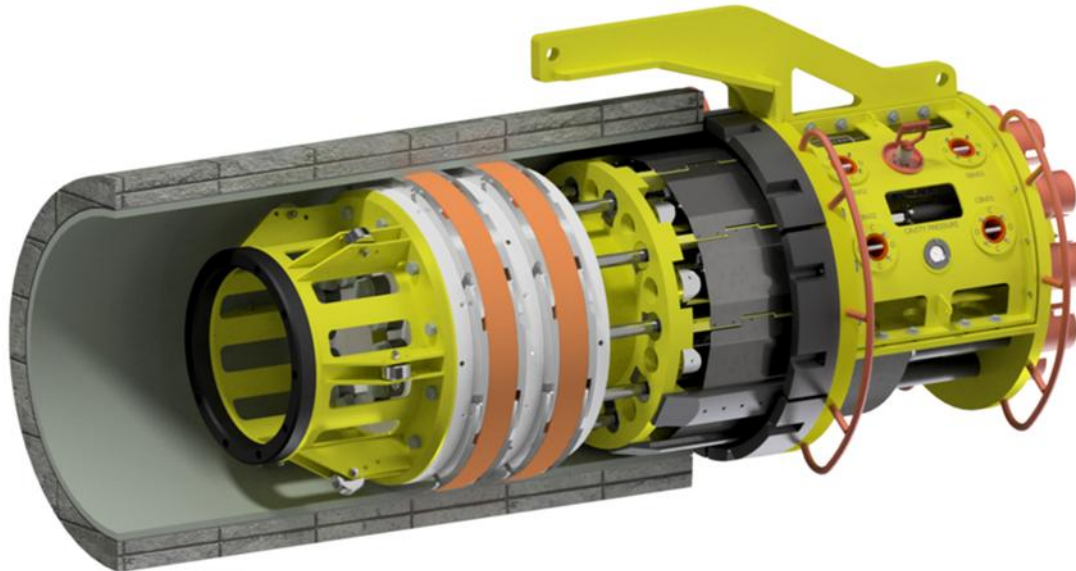
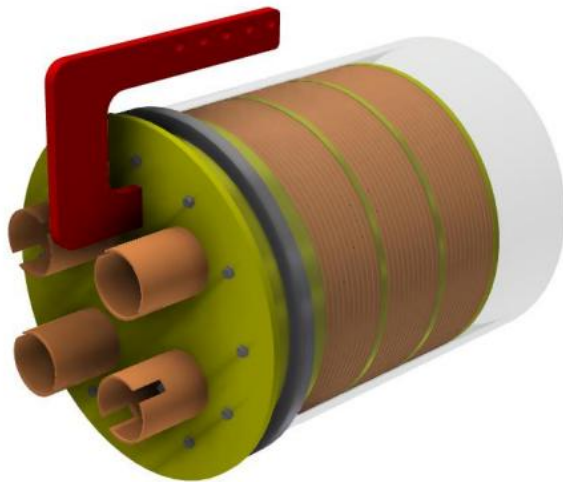
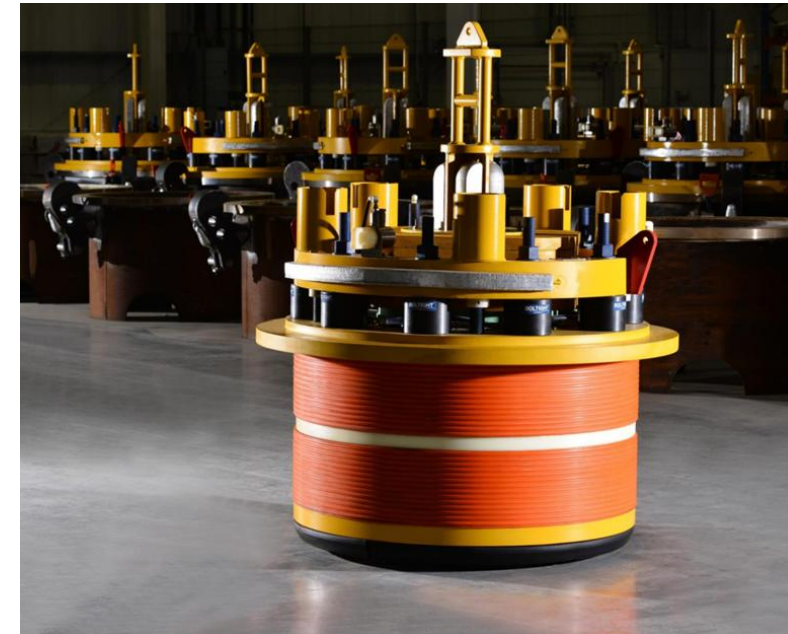
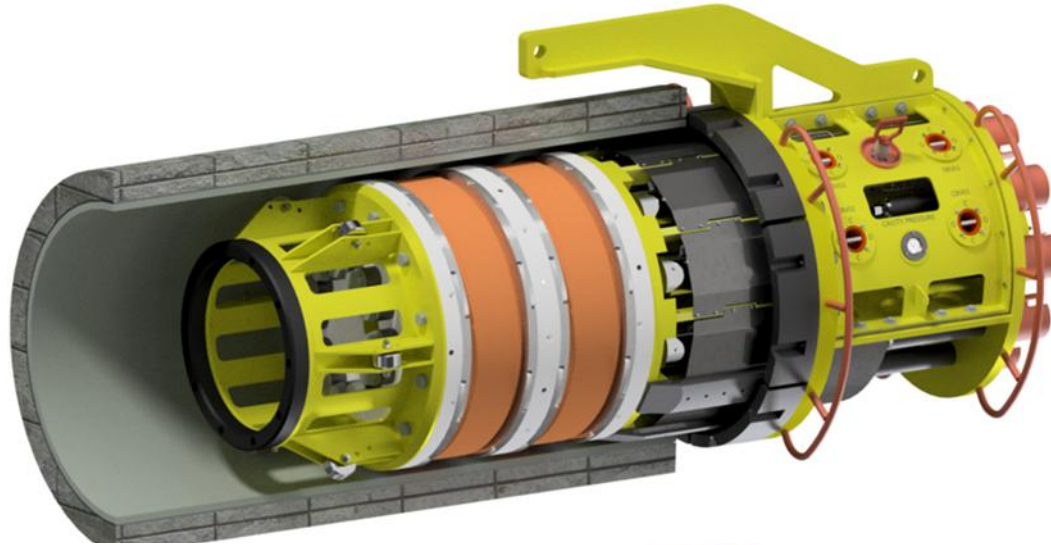
- Used on flexible's, steel catenary risers, umbilicals and cables.
- Hydraulically activated
- Enhanced Sealing Integrity: Actively engaged seals improve protection against water ingress and pressure changes.
- Extended Equipment Life: Helps prevent corrosion and damage to cables and risers inside J Tubes.
- Operational Flexibility: Can accommodate dynamic movements of cables and umbilical's due to environmental conditions.





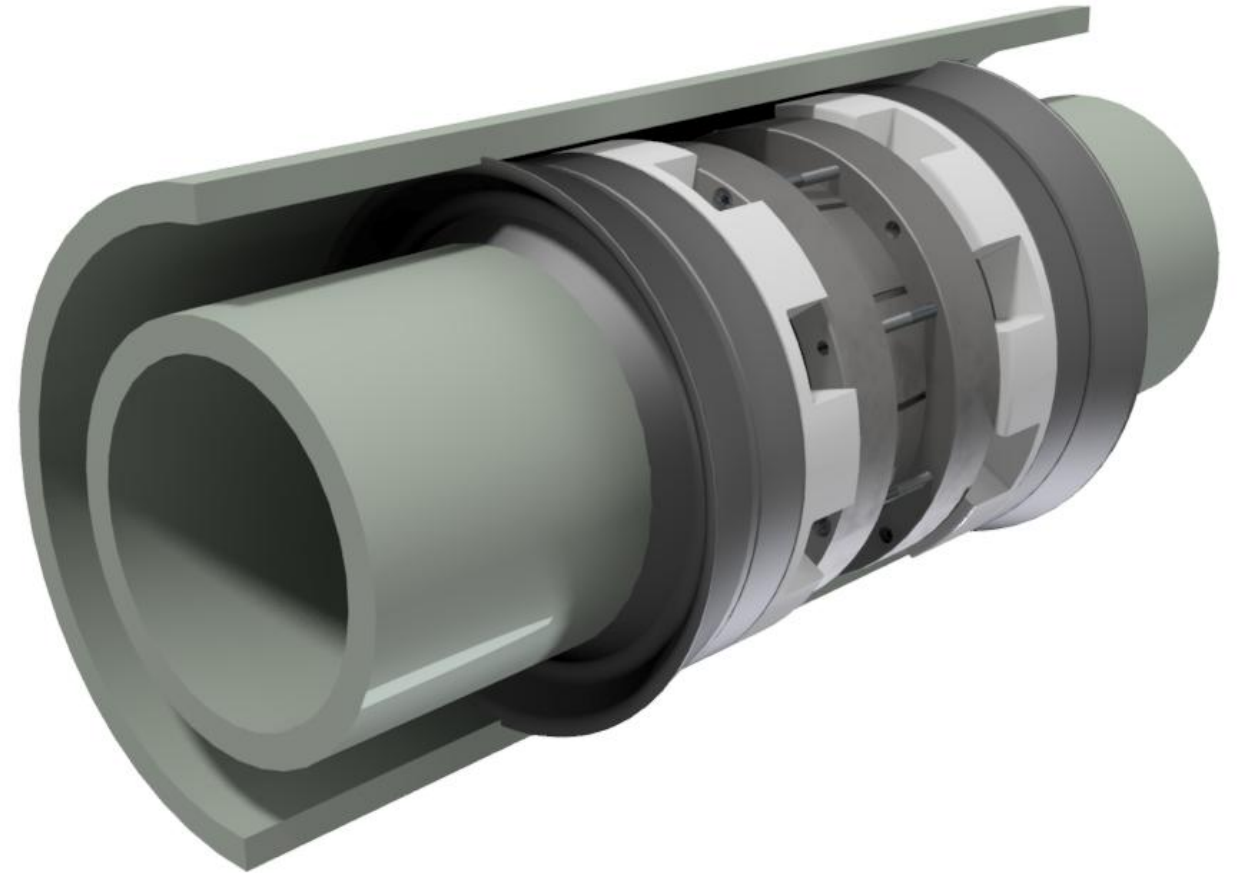
# Subsea – Plugs and Seals

- Environmental plug
- Pressure holding plug
- Suction pile plug
- Torque activate
- Hydraulically activated
- Access ports optional



# Subsea – Water Stops










- Having delivered more than 1900 Pipe-In-Pipe Waterstops Subsea Innovation has an extensive track record in their design and supply to clients worldwide.
- Shallow or deep water
- Dual Hardness seals
- Materials and grip force to match the pipeline
- Investment in HNBR manufacturing equipment

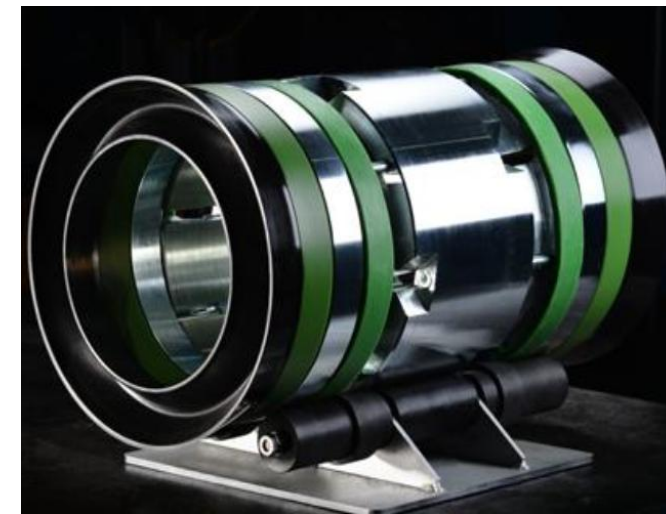




# Subsea – Water Stops

| Project |   | Specification  |
|---------|---|--|
| 351     |    | Shell Nile<br>06" x 10" seal @ 182 bar.g               |
| 401     |    | Shell Nakika<br>08" x 12" seal @ 322 bar.g             |
| 558     |    | BP Kingwest<br>06" x 10" seal @ 250 bar.g              |
| 560     |    | Technip R&D<br>08" x 15" seal @ 247 bar.g              |
| 612     |    | Total Dalia<br>12" x 17" seal @ 141 bar.g              |
| 641     |    | Eni K2<br>07" x 12" seal @ 197 bar.g                   |
| 650     |    | Nobel Energy Swordfish<br>06" x 10" seal @ 145 bar.g   |
| 655     |    | Triton Goldfinger<br>06" x 10" seal @ 258 bar.g        |
| 660     |    | Nobel Energy Ticonderoga<br>06" x 10" seal @ 150 bar.g |
| 701     |    | BP Atlantis<br>11" x 16" seal @ 217 bar.g              |
| 762     |    | BP R&D<br>08" x 12" seal @ 177 deg.c                   |
| 767     |    | Petrobras Plangas Canapu<br>08" x 13" seal @ 267 bar.g |
| 772     |    | BP Dorado<br>08" x 12" seal @ 147 bar.g                |
| 772a    |    | BP King South<br>06" x 10" seal @ 215 bar.g            |
| 831     |    | Helix Danny<br>08" x 12" seal @ 138 bar.g              |
| 777     |    | Total Pazflor<br>12" x 16" seal @ 110 bar.g            |
| 890     |    | Caesar Tonga<br>08" x 12" seal @ 200 bar.g             |
| 916     |  | Marathon Ozona<br>06" x 10" seal @ 125 bar.g           |
| 975     |  | BP Galapagos<br>08" x 12" seal @ 258 bar.g             |
| 975     |  | BP Galapagos<br>08" x 12" seal @ 258 bar.g             |
| 934     |  | Oselvar<br>10" x 14" seal @ 7.5 bar.g                  |
| 995     |  | BP Devenick<br>10" x 16" seal @ 13 bar.g               |
| 1022    |  | Marulk<br>11.75" x 15.5" seal @ 39 bar.g               |

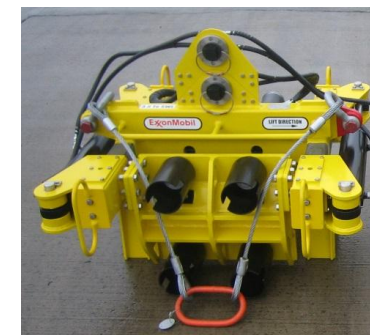
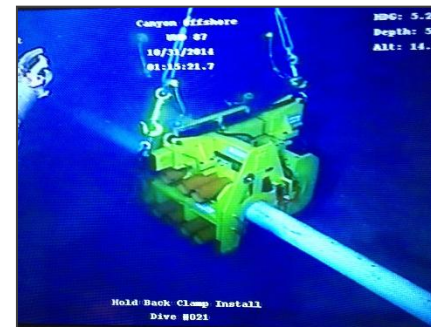
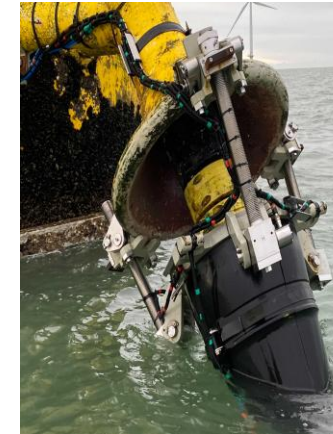
| Project |  | Specification  |
|---------|--|--|
| 1929    |  | Wintershall - Nova<br>8" x 10" @ 37 bar g                            |
| 1813    |  | Fieldwood - Katmai<br>8" x 12" @ 70.4 bar g                          |
| 1995    |  | Edvard Grieg<br>10" x 14" @ 10.9 bar g                               |
| 2038    |  | Talos – Bulleit Project<br>6" x 10" @ 44 bar g                       |
| 2069    |  | Murphy – Calliope Project<br>6" x 10" @ 229 bar g                    |
| 2035    |  | ONGC – NELP Block KG-DWN 98/2 Project<br>10" x 16" @ 41 bar.g        |
| 2056    |  | LLOG Exploration Offshore Praline<br>6" x 10" @ 83 bar g             |
| 2162    |  | Ceaser Tonga Subsea System Expansion<br>9.016" x 13.150" @ 157 bar g |
| 2212    |  | Murphy Dalmation<br>6" x 10" @ 260 bar g                             |



# Subsea - Remedial / Repair Projects

## Range of Projects & Equipment

- Cable Protection System repair
- Retro-Fit Cable Protection System Repair Solutions
- Cable Repair Solutions
- Installation & Handling Equipment
- Product Recover Clamps
- Bellmouth Clamps
- Hang-off & Tie Back Clamps

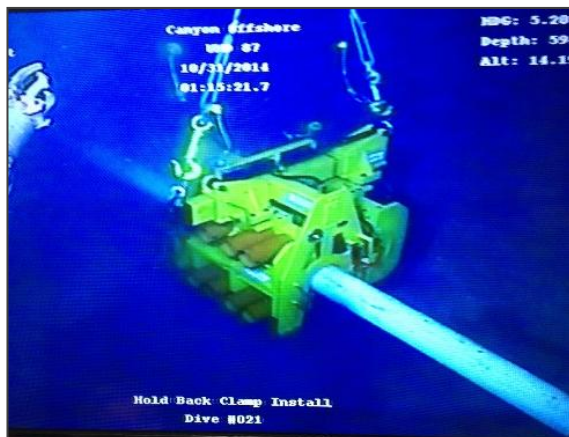




# Subsea - Remedial / Clamp Recovery Projects



14" & 18" 150t



| Item | Model                   | Client         | Serial No.   |
|------|-------------------------|----------------|--------------|
| 1    | 15Te Recovery clamp     | Subsea 7       | SN-236-01    |
| 2    | 8" Recovery clamp       | Technip        | SN-249-01    |
| 3    | 10" Recovery clamp      | Technip        | SN-249-02    |
| 4    | 15Te Recovery clamp     | Technip        | SN-275-01    |
| 5    | ROV Holdback clamp      | Subsea 7       | SN-412-01    |
| 6    | 70Te ROV Recovery clamp | Technip        | SN-744-01    |
| 7    | ROV Recovery clamp      | Technip        | SN-750-01    |
| 8    | 8-1/2" Mech clamp       | Petrobras      | SN-825-01    |
| 9    | 8-1/2" Mech clamp       | Petrobras      | SN-825-02    |
| 10   | 8-1/2" Mech clamp       | Petrobras      | SN-825-03    |
| 11   | 8-1/2" Mech clamp       | Petrobras      | SN-825-04    |
| 12   | 8-1/2" Mech clamp       | Petrobras      | SN-825-05    |
| 13   | 8-1/2" Mech clamp       | Petrobras      | SN-825-06    |
| 14   | 2-1/2" Recovery clamp   | Flexlife       | SN-871-01    |
| 15   | 2-1/2" Recovery clamp   | Flexlife       | SN-871-02    |
| 16   | 2-1/2" Recovery clamp   | Flexlife       | SN-871-03    |
| 17   | 6" Recovery clamp       | Flexlife       | SN-871-04    |
| 18   | 6" Recovery clamp       | Flexlife       | SN-871-05    |
| 19   | 6" Recovery clamp       | Flexlife       | SN-871-06    |
| 20   | 150Te Recovery Clamp    | Bourbon Subsea | SN-2322-9664 |

# Mission Equipment - Example

## Work Class ROV LARS systems

- Over 35 years experience in supplying LARS
- In excess of 150 launch and recovery systems (LARS) successfully delivered
- LARS have been supplied for a range of ROVs, Trenchers & Subsea Vehicles.
- Designed, built & tested in-house
- All LARS designed, built & tested in accordance with the relevant codes (DNVGL / Lloyds Reg. / BV / ISR)
- Bespoke LARS & SIL Standard LARS supplied
- Onsite commissioning available
- Experience with LARS in a range of sectors
  - Oil & Gas
  - Navy
  - Tidal
  - Renewables
  - Subsea Mining
- Supplied other deployment & handing systems

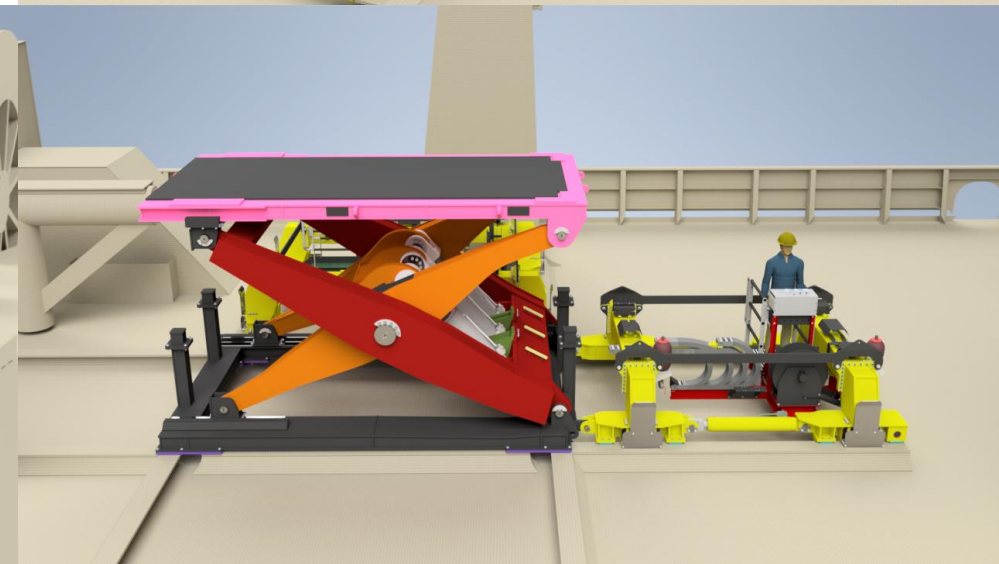
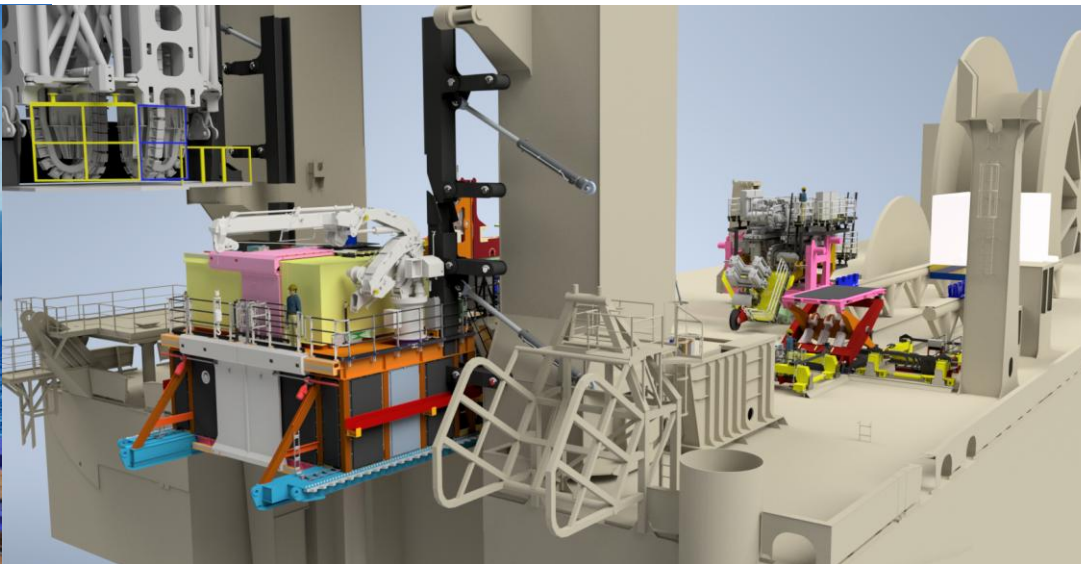
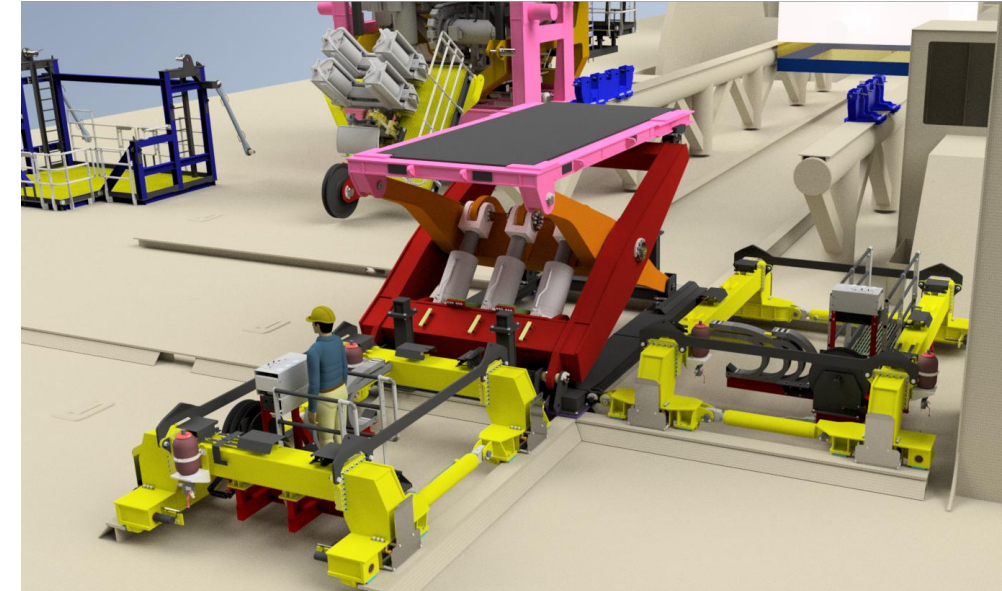




# Mission Equipment - Example

## Range of Projects & Equipment

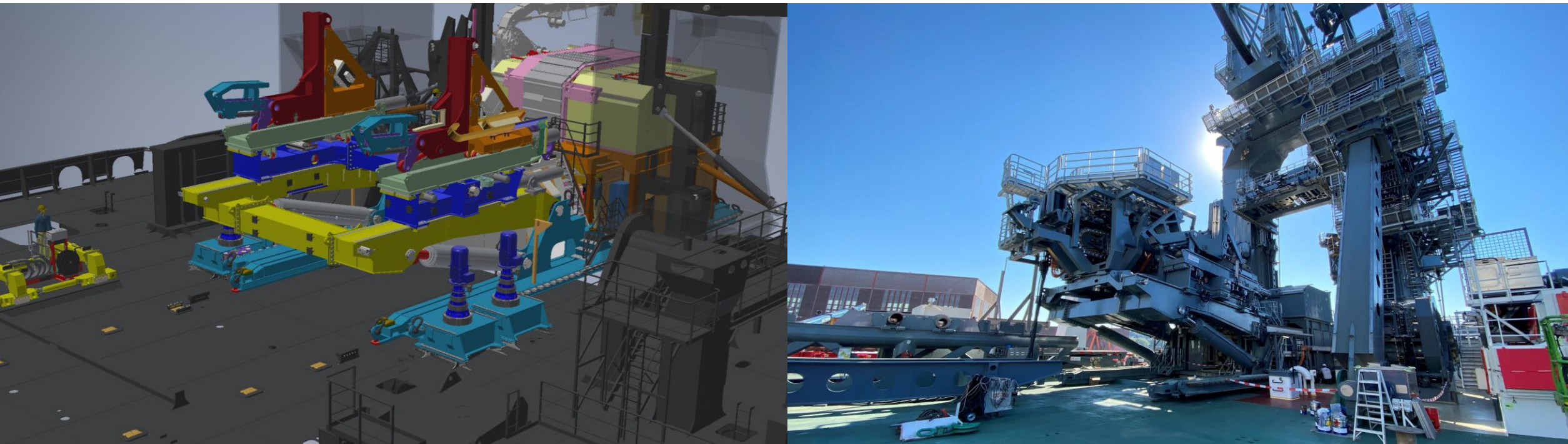
- Deck Equipment
- Mattress Handling Systems
- Bespoke Engineered Solutions & Equipment
- Skidding Systems
- Lay Equipment
- Trencher Launch and Recovery Systems
- ROV Launch and Recovery Systems



# Mission Equipment - Example

## General Track Record & Experience – Past Bespoke Project

- PLET Handling Spread & Service Habitat (450 Te of Deck Equipment)
  - Inc. Skidding System

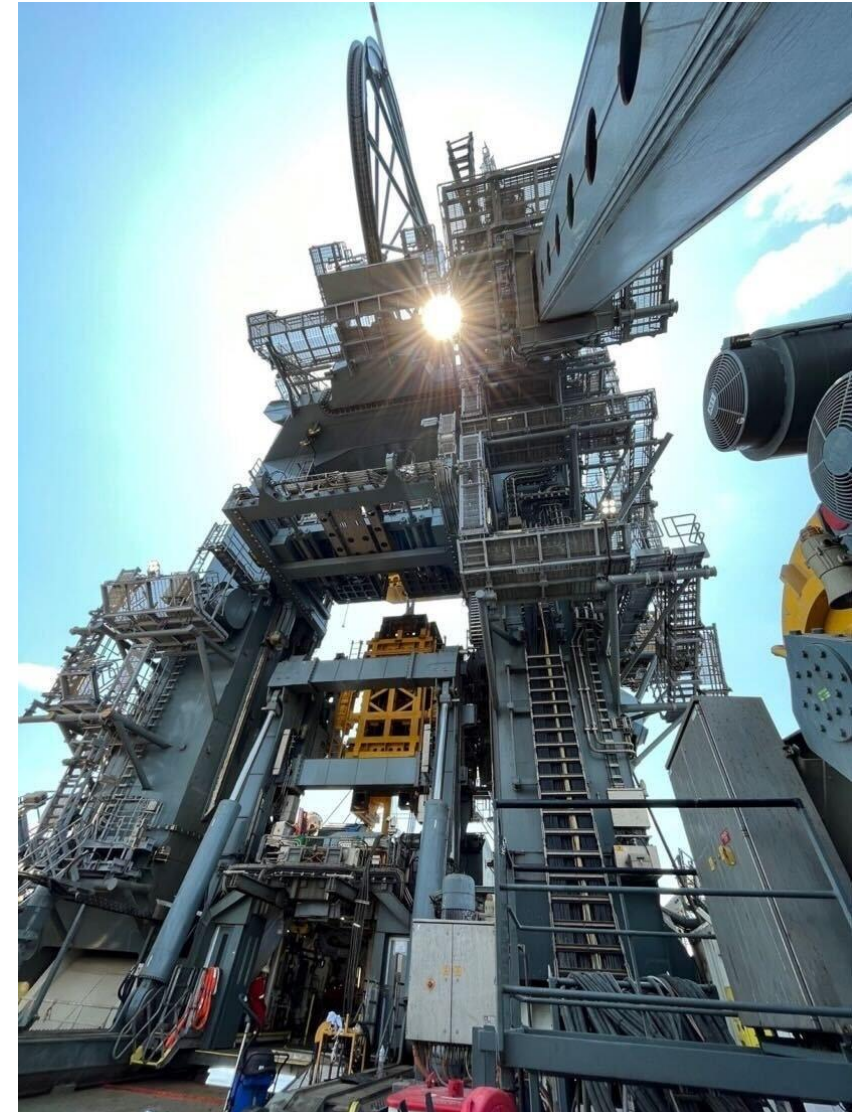




# Mission Equipment - Example

## Track Record & Experience – Past Bespoke Projects

- PLET Handling Spread & Service Habitat (450 Te of Deck Equipment)
- Inc. Skidding System





# Mission Equipment - Example

## Track Record & Experience – Past Bespoke Projects

- PLET Handling Spread & Service Habitat (450 Te of Deck Equipment)
  - Inc. Skidding System

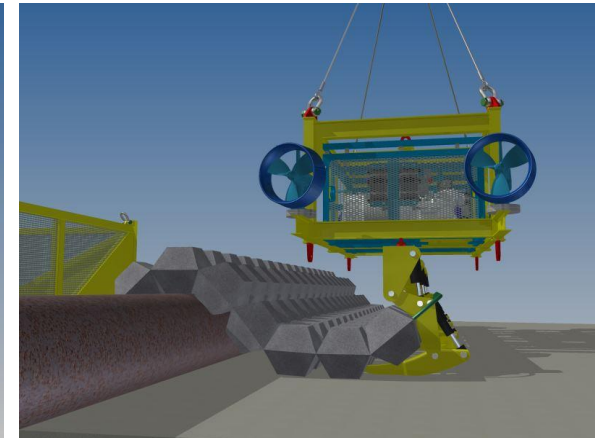
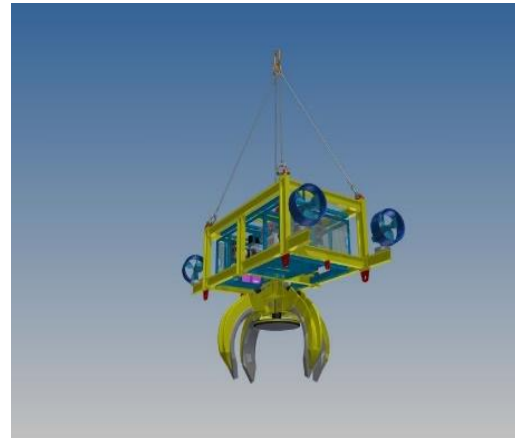
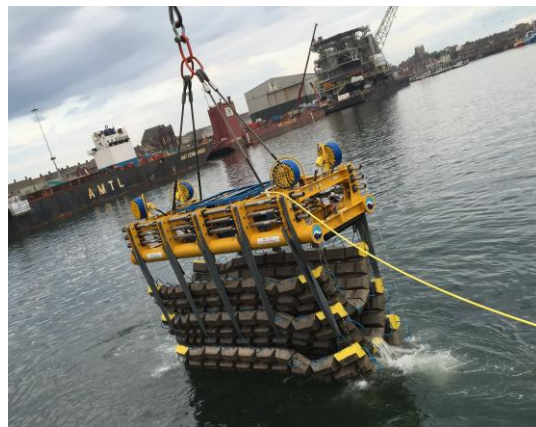
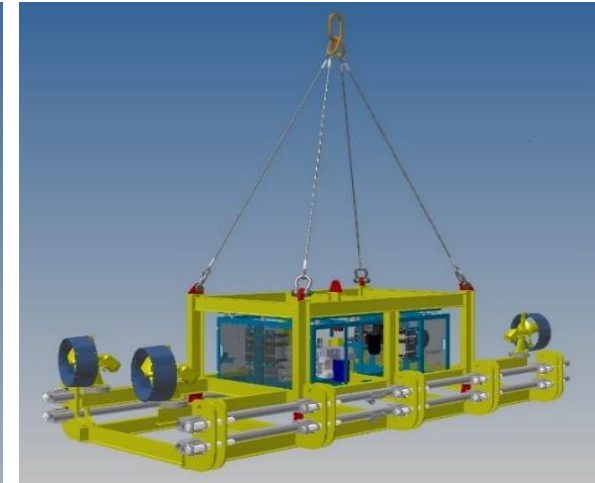
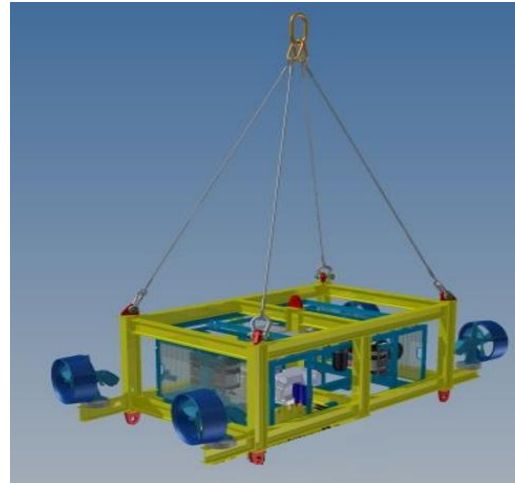




# Mission Equipment - Example

## Multi Purpose Handling & Deployment System – Conceptual Design Development & FEED

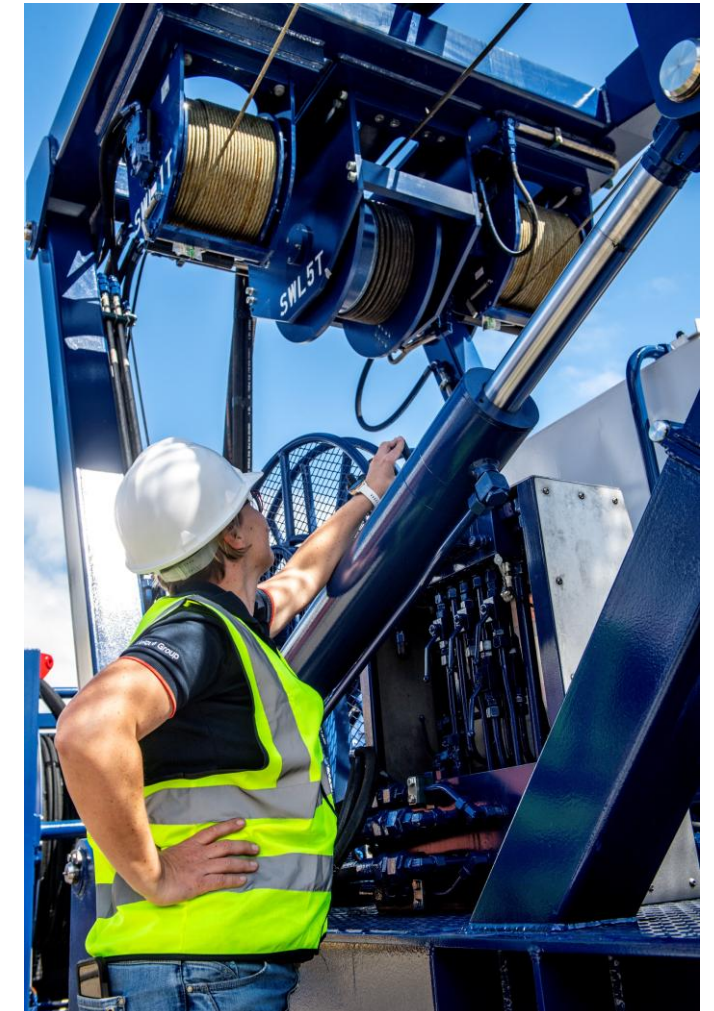
- Multi Purpose Modular Frame
- Central Control System
- Verified Lifting Frame
- Remote Operated
- Modular Application Tooling –
  - Mattress Deployment
  - Rock Dump & Boulder Positioning
  - Mattress Removal



# Controlled Mass Flow Excavation

## Advantages of CMFE over other trenching methods

- Non-Contact
- Avoids damage to assets or seabed.
- Precision
- Real-time control for accurate operations.
- Versatility
- Works in diverse seabed conditions.
- Eco-Friendly
- Targets specific areas, minimal disturbance.
- Cost-Effective
- Reduces reliance on heavy equipment.





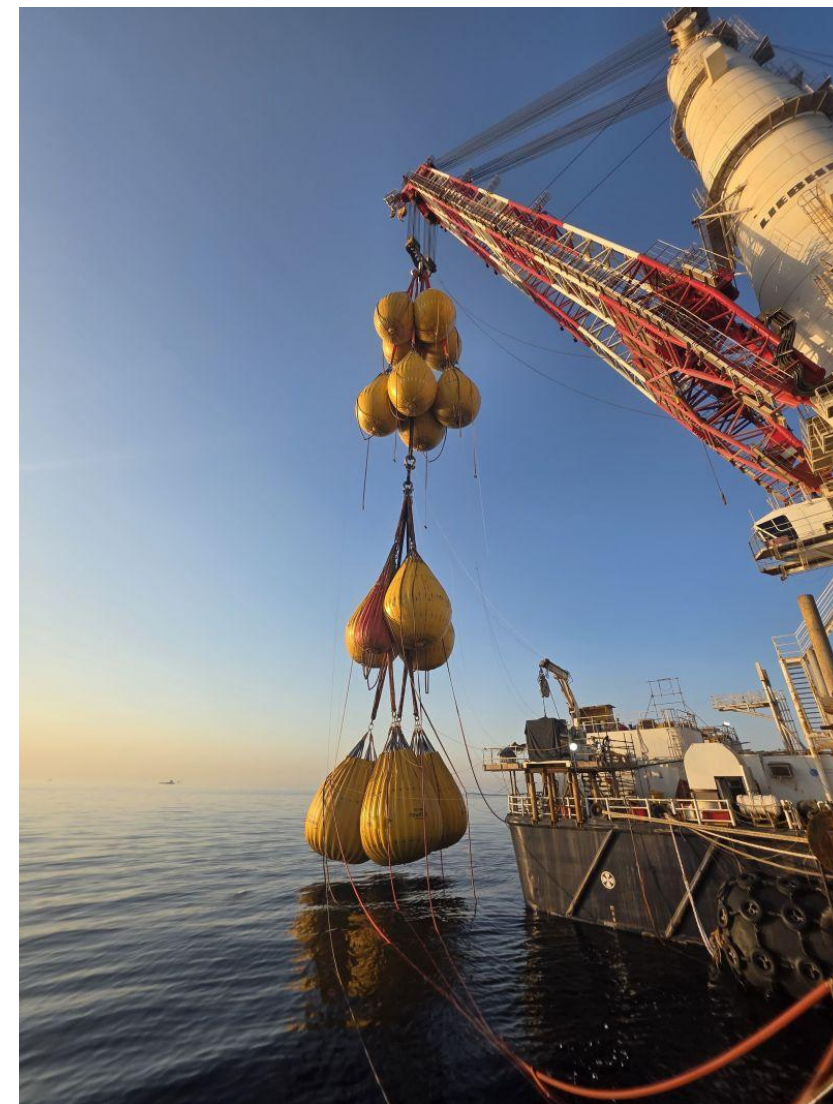
# Water Weights

## MARKET SECTORS SERVED - Oil + Gas

- Renewable Energy
- - Marine + Shipping
- - Defense + Government Bodies
- - Construction Industry
- - Metals
- - Water
- - Testing
- - Utilities

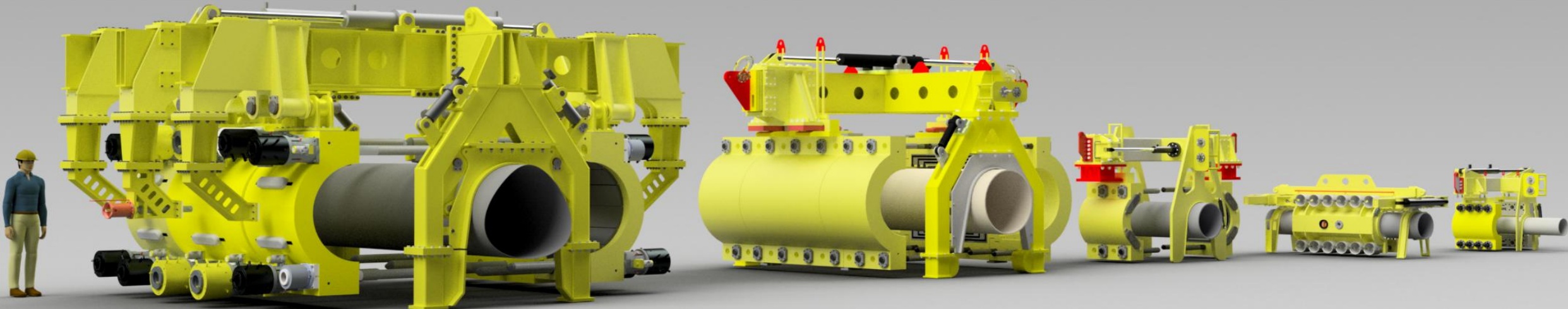
## CUSTOMERS SERVED - Offshore E+P

- EPC Offshore Installation
- - Diving + Salvage
- - Commercial Marine
- - Shipyards
- - Ship Owners
- - Navy + Coast Guard
- - Power Plant
- - Testing Service



# EPRS - Example

- The collets and seals are jointly activated (\*A\*)
- A spool piece is added post activation and testing (\*B\*)
- Pipeline range 2" NS to 48" NS
- Pressure range 0 to 600 bar.g
- Temperatures 0° C to +150° C
- Diver or ROV installed shallow or deep water
- Inter-changeable structural collet packs
- 25 - 40-year design life
- Designed to accept API 5L or DNV diameter tolerances with a single seal set
- Additional change parts can be supplied to increase diameter tolerances or cater for multiple wall thickness of pipes
- Special designs undertaken for specific temperature and pressures, also specific geometry i.e. sealing over a flange joint





# Deep water EPRS - Example

ROV Automated Structural Pipeline Repair clamps

Size: 20", 30", 34", 42", 44"

Pressure: Ranging from 175 Bar g to 344 Bar g

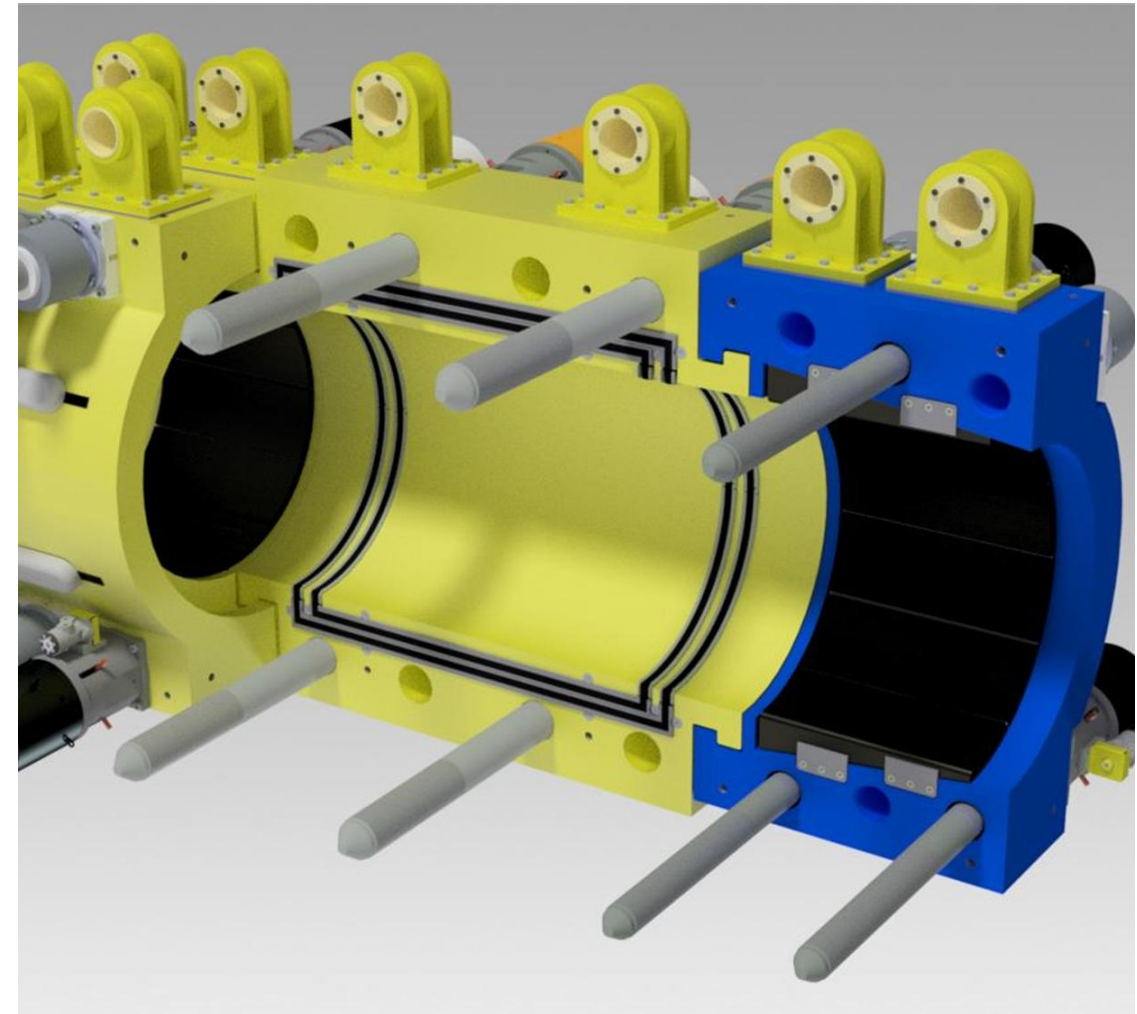
Activation: Fully ROV Automated

Installation: ROV Installed c/w Installation Tool



# Modular Clamp and Connector System

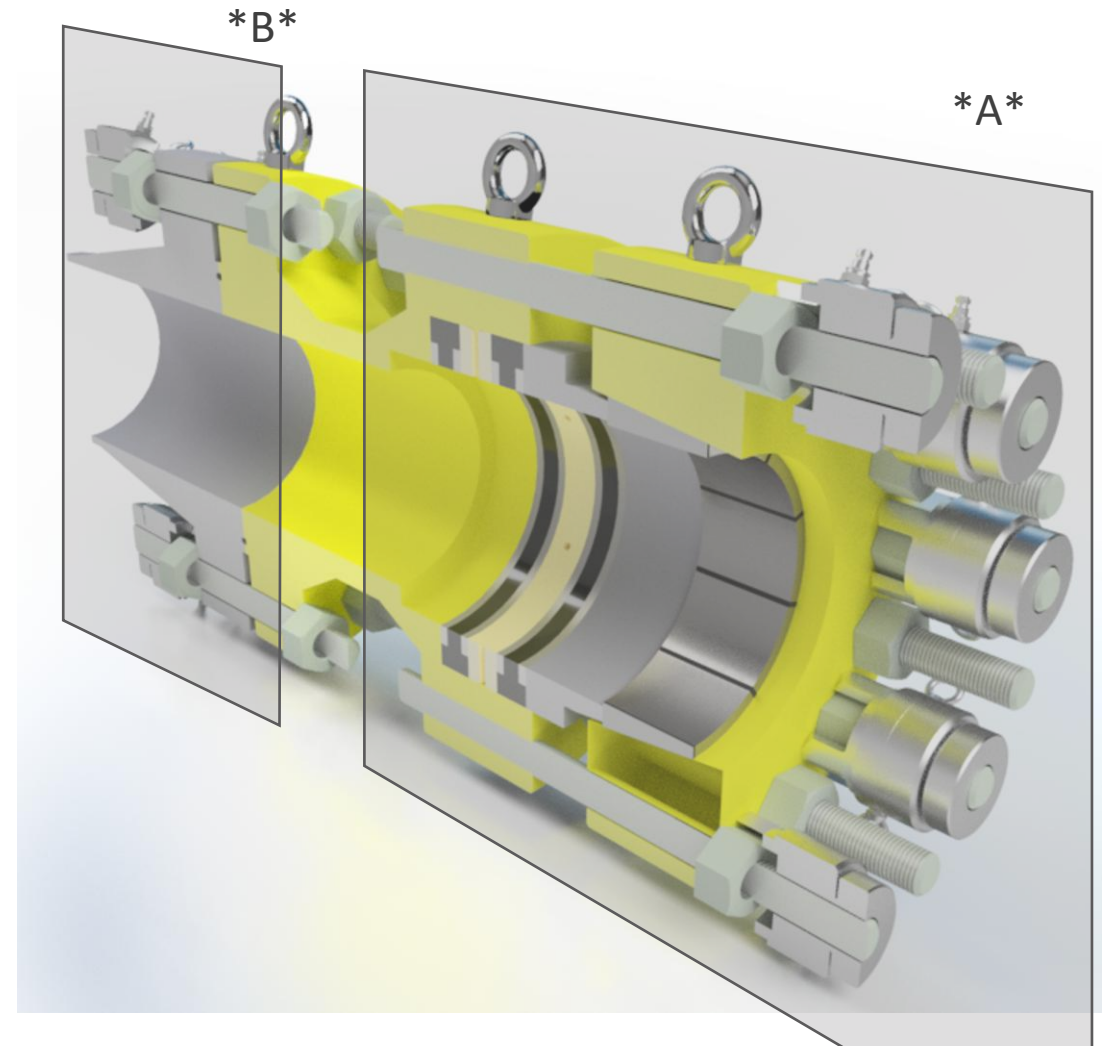
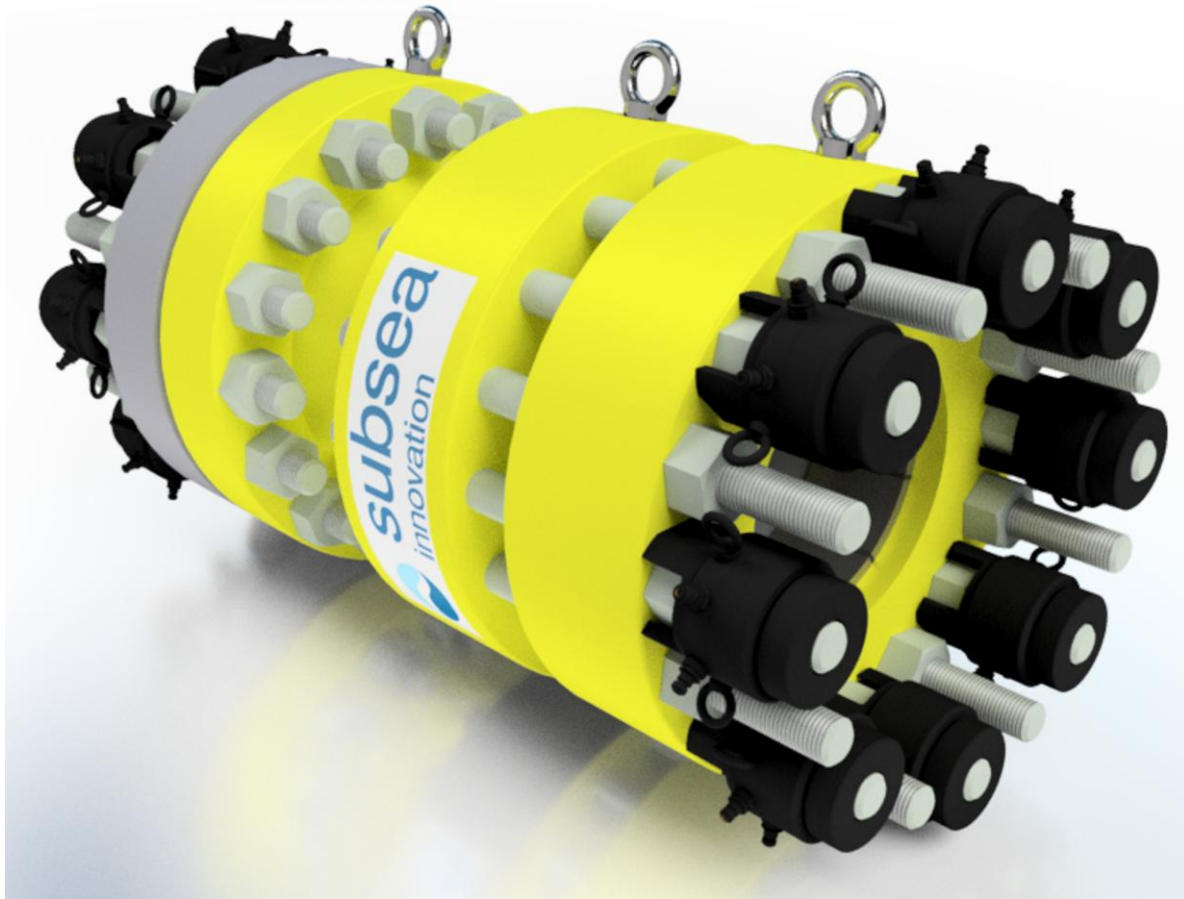
- System is modular by adding machined lip profile on each end of the clamp body.
- The addition of a pair of SI-Grip collet systems restores the pipelines original bending moment and tensile load carrying capacity
- Collet packs are interchangeable between clamps, connectors.
- Change parts for seal and collets to cover a large diameter range.
- Diver installable or ROV.
- Shallow or deep water.



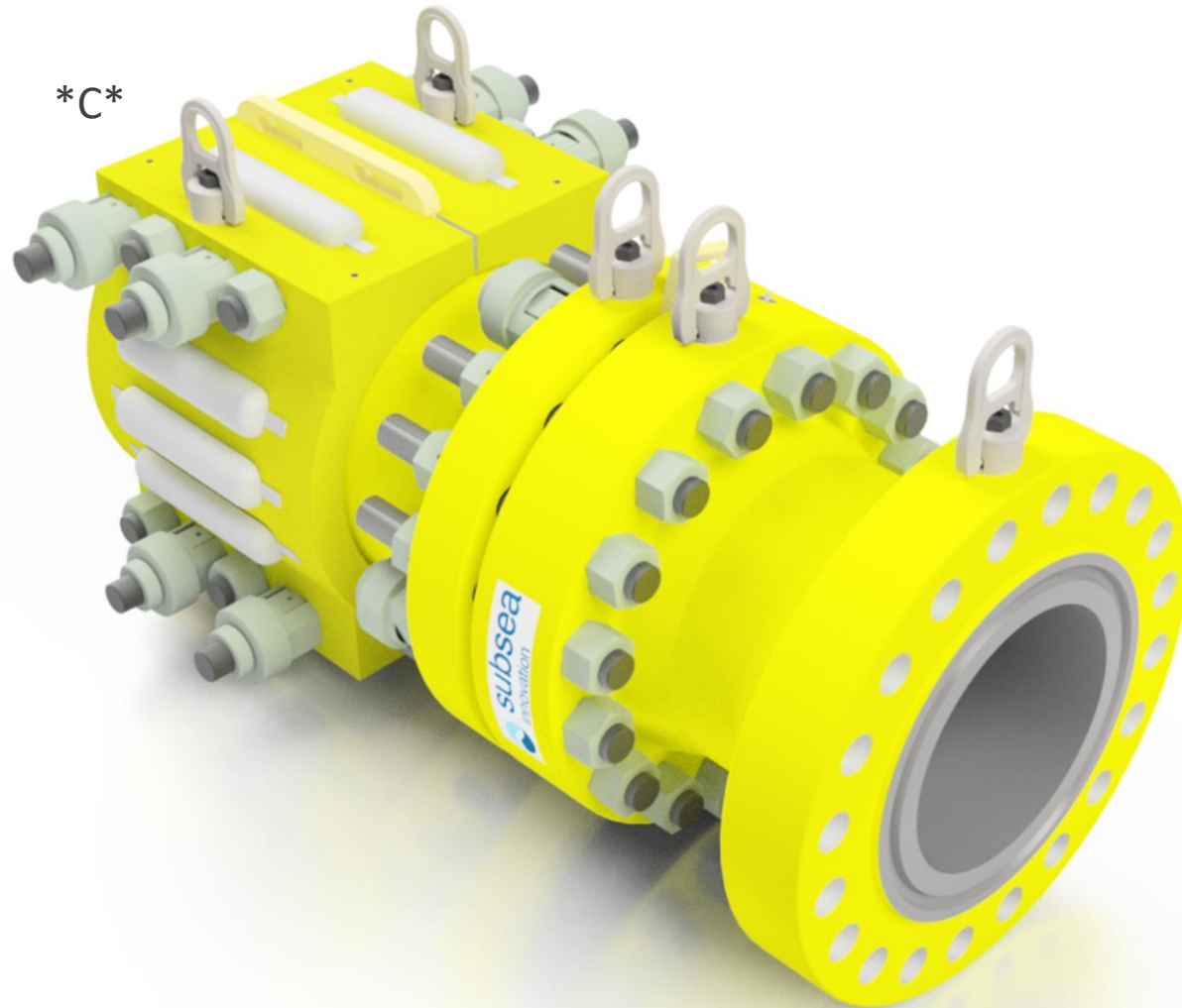


# Basic Diver Installed Connector

- The collets and seals are jointly activated (\*A\*)
- A spool piece is added post activation and testing (\*B\*).



# Connector with interchangeable collets

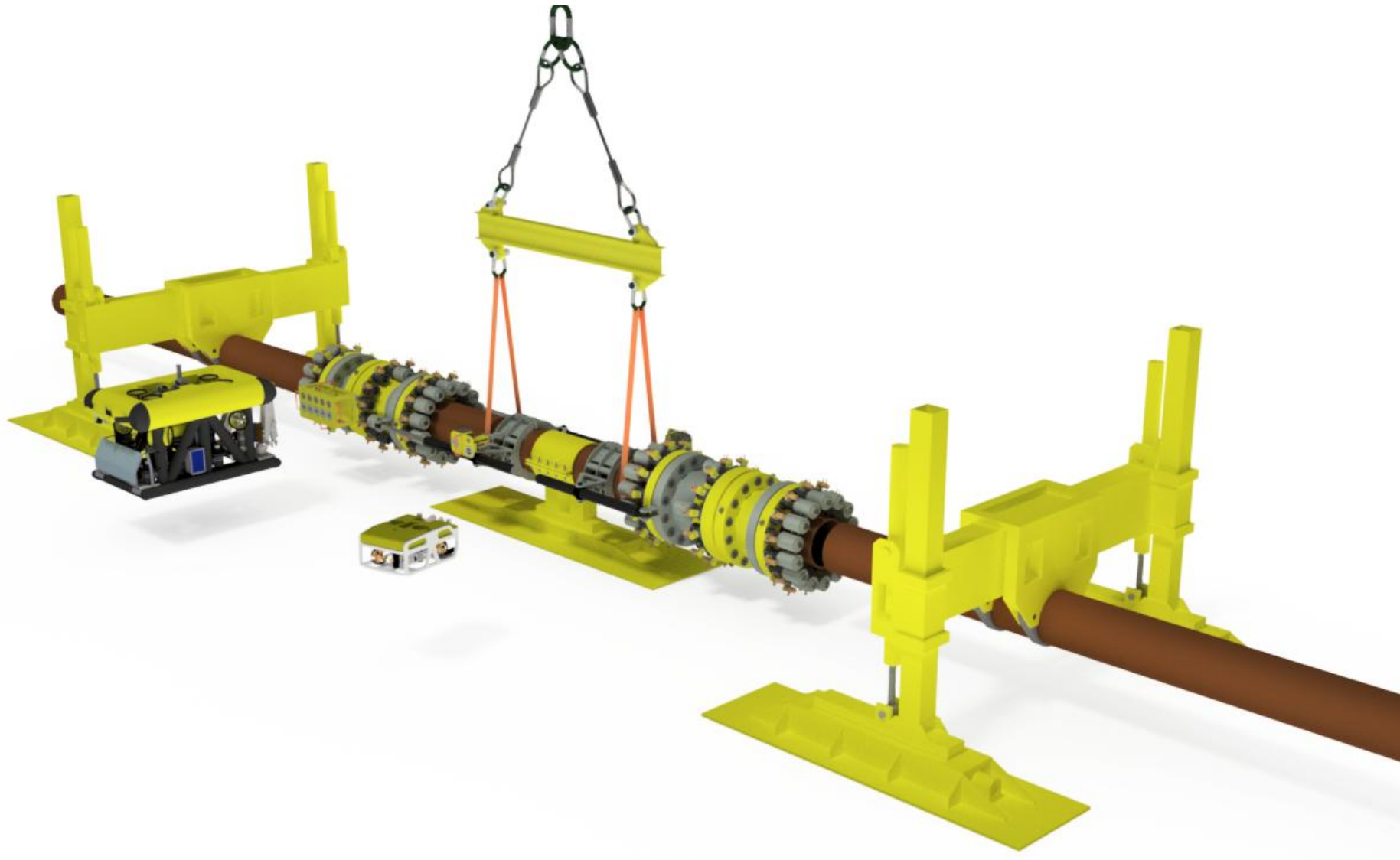


- Collets, Seals and Flange connection bolts are all independently activated.
- Split collet housing (\*C\*) used to increase pipeline clearance.
- Dual Sealing
- F22 Forged bodies
- Interchangeable seals and collets accommodate a range of pipe wall thicknesses.



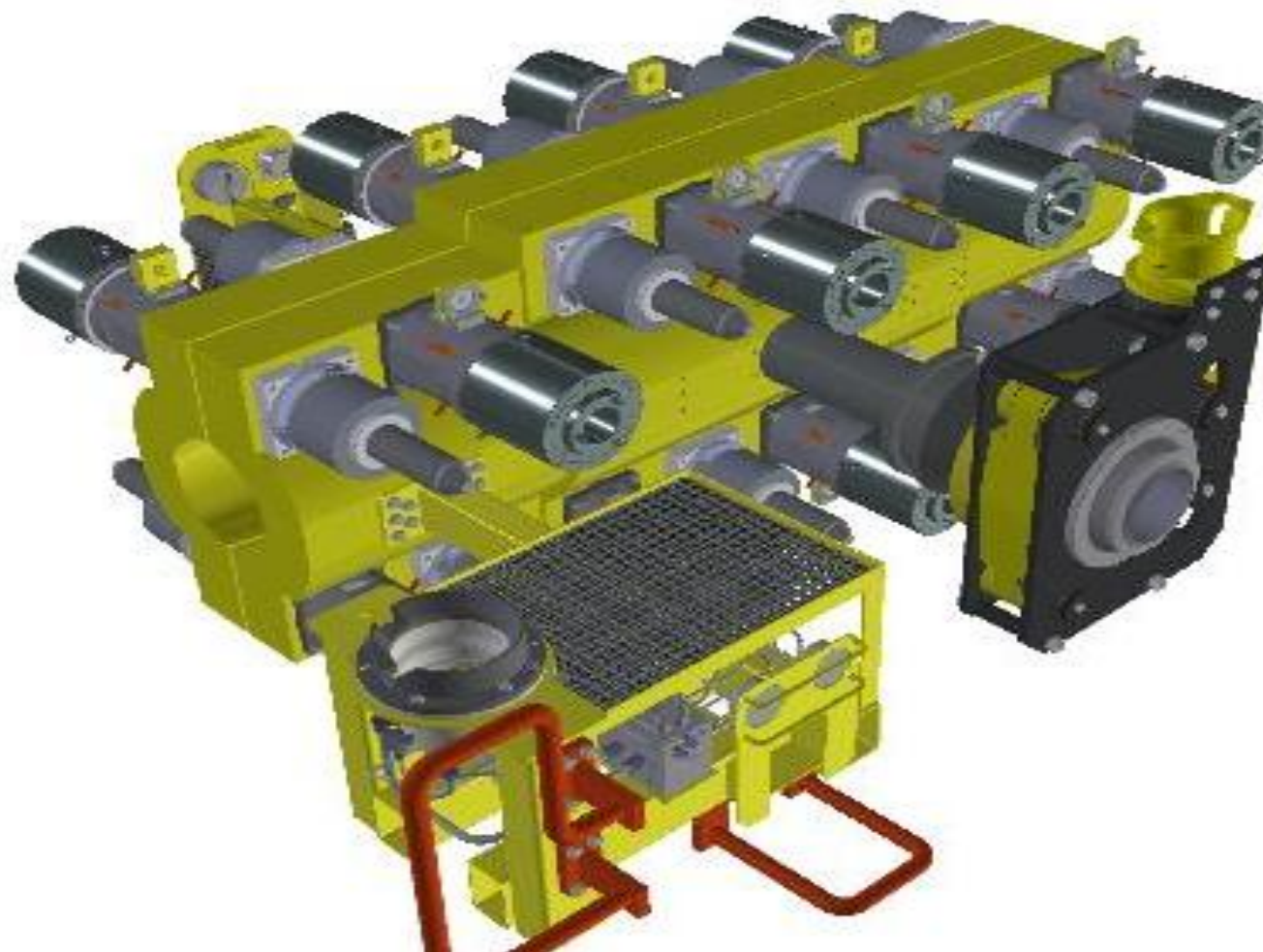
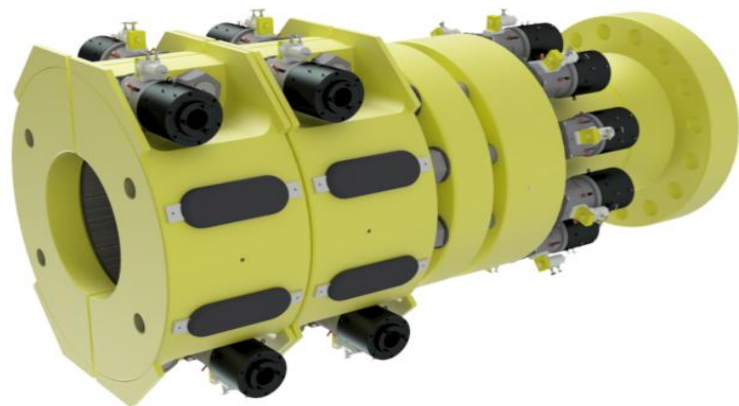


# Sleeve Connector Installation example



# EPRS - Example

## Connectors and Hot Tap T



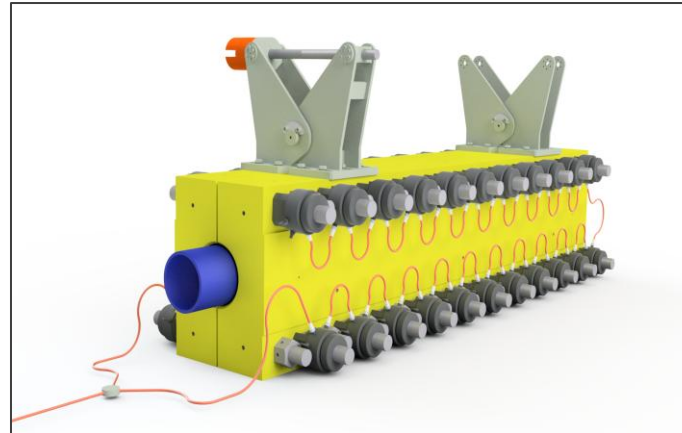


# EPRS - Example

## Rapid turn around clamp

- Water injection line repair
- UT X Ray
- Using plate material
- Chemical and mechanically tested
- Turned around in 10 weeks

### Engineering Design



### Build & Assembly



### Testing & Inspection














### Supply



# EPRS – Project History

| Project | Size | Client  | Type                    | Installation Method | Qty | Service  | Depth | Year of Build | Design Pressure |
|---------|------|---|-------------------------|---------------------|-----|----------|-------|---------------|-----------------|
| 1156    | 12"  |    | Flange Connector        | Diver               | 1   | Sour     | -     | 2011          | 217.5 Bar g     |
| 1189    | 12"  |    | Repair Clamp            | Diver               | 10  | Non-Sour | 92m   | 2012          | 127.5 Bar g     |
| 1199    | 8"   |    | Connector               | Diver               | 1   | Non-Sour | 35m   | 2012          | 75 Bar g        |
| 1362    | 24"  |    | Repair Clamp            | Diver               | 2   | Sour     | 50m   | 2014          | 131 Bar g       |
| 1362    | 24"  |    | Flange Connector        | Diver               | 2   | Sour     | 50m   | 2014          | 131 Bar g       |
| 1436    | 16"  |    | Structural Repair Clamp | Diver               | 1   | Sour     | 65m   | 2015          | 431.25 Bar g    |
|         | 28"  |   |                         |                     | 1   | Sour     | 65m   | 2015          | 218.75 Bar g    |
|         | 32"  |   |                         |                     | 1   | Sour     | 65m   | 2015          | 186.3 Bar g     |
|         | 38"  |   |                         |                     | 1   | Sour     | 65m   | 2015          | 206.2 Bar g     |
| 1437    | 16"  |    | Flange Connector        | Diver               | 1   | Sour     | 65m   | 2015          | 431.25 Bar g    |
| 1408    | 20"  |    | Structural Repair Clamp | ROV                 | 1   | Sour     | 20m   | 2016          | 202 Bar g       |
|         | 30"  |   |                         |                     | 1   | Sour     | 1350m | 2016          | 306 Bar         |
|         | 34"  |   |                         |                     | 1   | Sour     | 130m  | 2016          | 344 Bar g       |
|         | 42"  |    |                         |                     | 1   | Sour     | 250m  | 2016          | 229 Bar g       |
|         | 44"  |   |                         |                     | 1   | Sour     | 122m  | 2016          | 176 Bar g       |
| 1955    | 10"  |    | Repair Clamp            | Diver               | 3   | Non-Sour | 125m  | 2019          | 330 Bar g       |
| 2067    | 28"  |    | Repair Clamp            | Diver               | 1   | Sour     | -     | 2021          | 340 Bar g       |
|         |      |  | Connector               | Diver               | 2   | Sour     | -     | 2021          | 340 Bar g       |

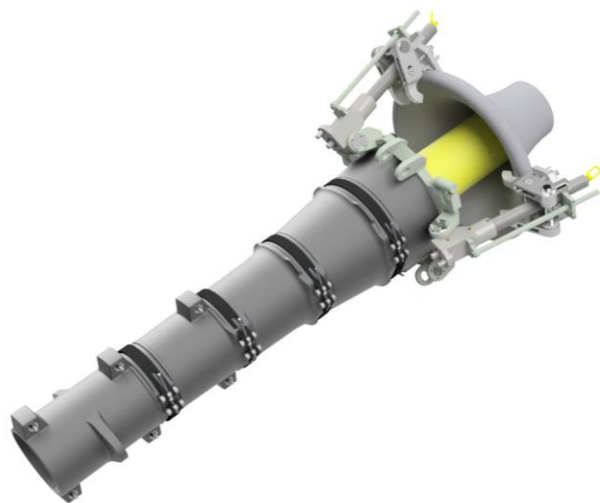
| Project | Size | Client  | Type                    | Installation Method | Qty | Service  | Depth | Year of Build | Design Pressure |
|---------|------|---|-------------------------|---------------------|-----|----------|-------|---------------|-----------------|
| 259     | 10"  |    |                         | ROV                 | 2   | Non Sour | 600m  | 2001          | 250 Bar g       |
|         | 12"  |   |                         |                     | 1   | Sour     | 1000m | 2001          | 250 Bar g       |
|         | 16"  |   |                         |                     | 1   | Non Sour | 1000m | 2001          | 350 Bar g       |
|         | 18"  |   |                         |                     | 1   | Non Sour | 600m  | 2001          | 312.5 Bar g     |
|         | 20"  |   |                         |                     | 1   | Sour     | 1000m | 2001          | 250 Bar g       |
|         | 22"  |   |                         |                     | 1   | Sour     | 1000m | 2001          | 250 Bar g       |
|         | 24"  |   |                         |                     | 1   | Sour     | 1000m | 2001          | 232.5 Bar g     |
| 598     | 8"   |    | Repair Clamp            | ROV                 | 1   | Non Sour |       |               |                 |
| 627     | 24"  |    | Repair Clamp            | ROV                 | 1   | Non Sour | 150m  | 2004          | 43.1 Bar g      |
| 654     | 10"  |    | Repair Clamp            | ROV                 | 1   | Non Sour | 3000m | 2005          | 155 Bar g       |
| 662     | 6"   |    | Repair Clamp            | ROV                 | 2   | Non-Sour | 3000m | 2006          | 155 Bar g       |
|         | 12"  |   |                         |                     | 2   | Non-Sour | 3000m | 2006          | 155 Bar g       |
|         | 16"  |   |                         |                     | 2   | Non-Sour | 3000m | 2006          | 155 Bar g       |
| 825     | 8.5" |    | Repair Clamp            | Diver               | 6   | Sour     | -     | 2008          | 224 Bar g       |
| 836     | 12"  |    | Repair Clamp            | ROV                 | 1   | Non-Sour | 190m  | 2010          | 264 Bar g       |
|         | 22"  |   |                         |                     | 2   | Non-Sour | 190m  | 2010          | 264 Bar g       |
| 847     | 16"  |  | Repair Clamp            | ROV                 | 1   | Sour     | 130m  | 2008          | 256 Bar g       |
| 849     | 22"  |  | Repair Clamp            | Diver               | 1   | Non-Sour | 70m   | 2008          | 150 Bar g       |
| 903     | 6"   |  | Structural Repair Clamp | Diver               | 2   | Sour     | -     | 2009          | 286.25 Bar g    |
| 917     | 18"  |  | Repair Clamp            | ROV                 | 1   | Sour     | 70m   | 2009          | 150 Bar g       |
| 950     | 36"  |  | Flange Connector        | Diver               | 2   | Non-Sour | 80m   | 2010          | 169.9 Bar g     |
| 950     | 6"   |  | Repair Clamp            | Diver               | 1   | Non-Sour | 85m   | 2010          | 450.6 Bar g     |
|         | 36"  |   |                         |                     | 1   | Non-Sour | 85m   | 2010          | 169.9 Bar g     |



# Renewables – Example (special product)

## Dynamic Bend Stiffener – CPS Repair Solution

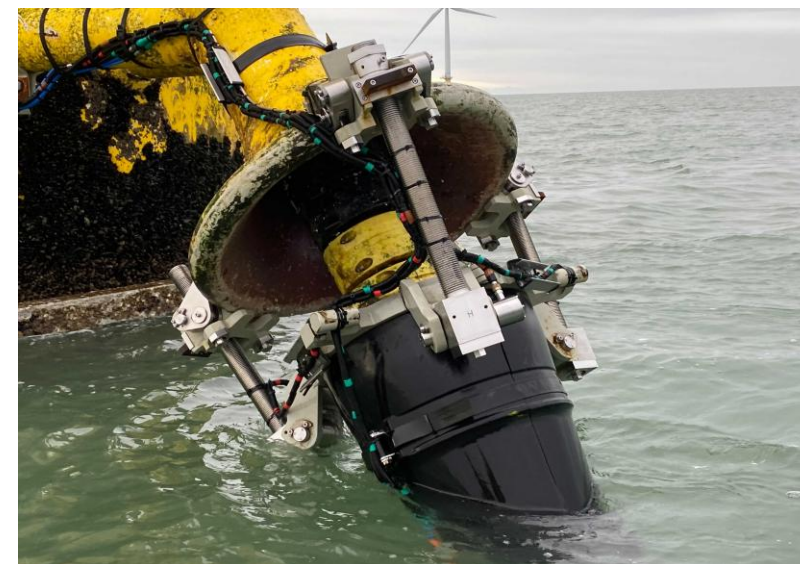
Conceptual Engineering Solutions



Construction & Test



Offshore Installation





# Service Works, Maintenance & Refurbishments

## LARS Refurbishments

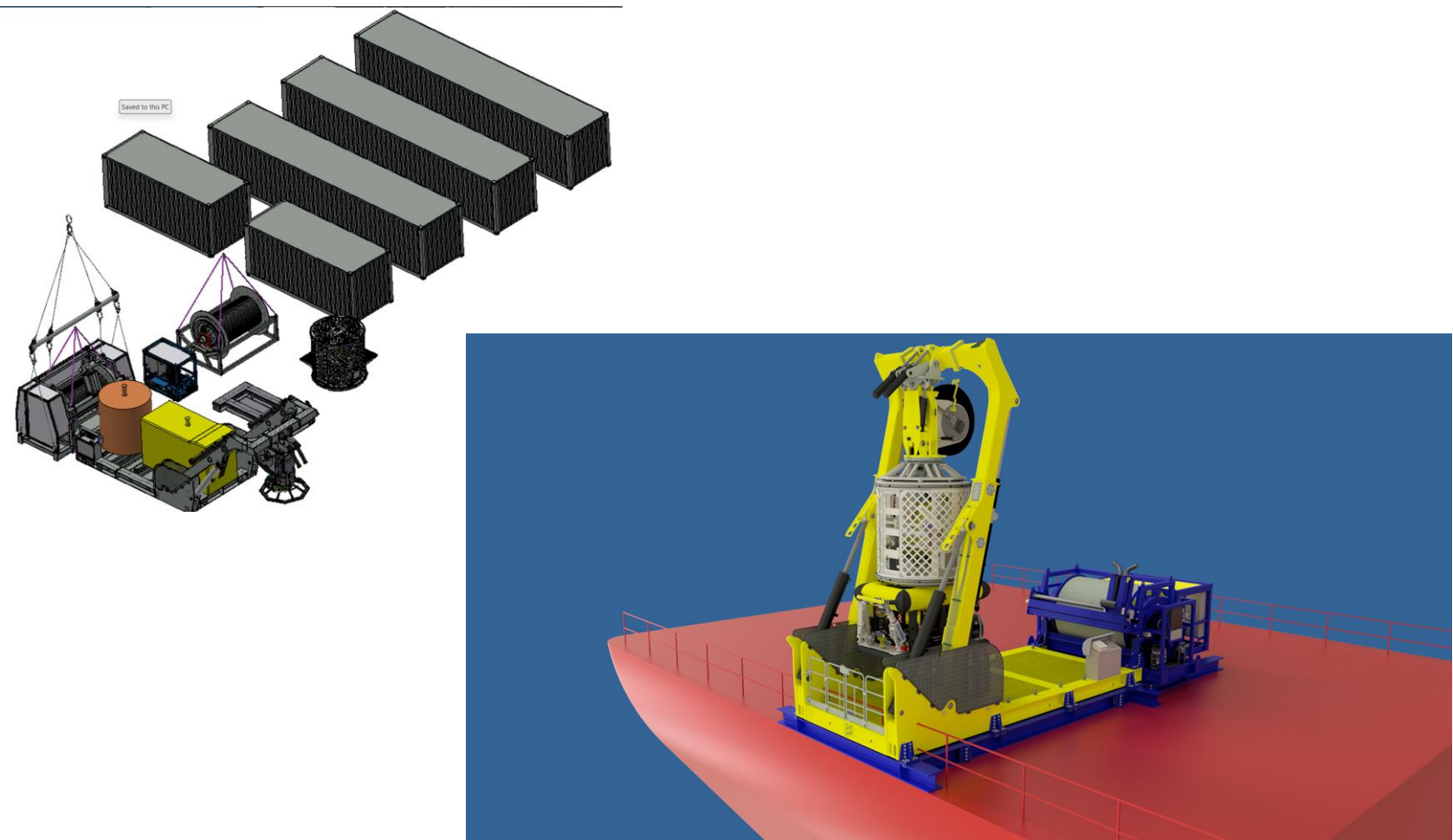


Project Managers



# Current project examples

## Containerized LARs system For the Italian Navy





# Get in touch for end to end **Subsea Solutions.**

## MIDDLE EAST

**UAE, Abu Dhabi**  
Unique System LLC  
T: +971 2 5575563  
E: [uaesales@uniquegroup.com](mailto:uaesales@uniquegroup.com)

**UAE, Sharjah**  
Unique System FZE  
T: +971 6 5130333  
E: [uaesales@uniquegroup.com](mailto:uaesales@uniquegroup.com)

**Saudi Arabia, Al Khobar**  
Muraba Alsahara  
Trading Company  
T: +966 59 7012365  
E: [ksasales@uniquegroup.com](mailto:ksasales@uniquegroup.com)

**Qatar, Doha**  
Unique System  
TR & ENG WLL  
T: +974 44147079  
E: [qatarsales@uniquegroup.com](mailto:qatarsales@uniquegroup.com)

## AFRICAS

**South Africa, Cape Town**  
Unique Hydra (Pty) Ltd  
T: +27 21 835 7900  
E: [sasales@uniquegroup.com](mailto:sasales@uniquegroup.com)

## AMERICAS

**USA, Georgia, Suwanee**  
Water Weights Inc  
T: +1 909 626 8316  
E: [buoyancyballast@uniquegroup.com](mailto:buoyancyballast@uniquegroup.com)

**USA, California, Montclair**  
Water Weights Inc  
T: +1 909 626 8316  
E: [buoyancyballast@uniquegroup.com](mailto:buoyancyballast@uniquegroup.com)

**USA, Texas, Houston**  
Unique System LLC  
T: +1 713 937 6193  
E: [usasales@uniquegroup.com](mailto:usasales@uniquegroup.com)

## ASIA PACIFIC

**India, Navi Mumbai**  
Unique Hydra  
(India) Pvt. Ltd.  
T: +91 22 27619975  
E: [indiasales@uniquegroup.com](mailto:indiasales@uniquegroup.com)

**India, Vizag**  
Unique Hydra  
(India) Pvt. Ltd.  
E: [uhi@uniquegroup.com](mailto:uhi@uniquegroup.com)

**Australia, Perth**  
Unique Subsea  
Australia Pty. Ltd.  
T: +61 418 205 212  
E: [aussales@uniquegroup.com](mailto:aussales@uniquegroup.com)

**Singapore**  
Unique System  
(SEA) Pte Ltd.  
T: +65 6542 1800  
E: [fareastsales@uniquegroup.com](mailto:fareastsales@uniquegroup.com)

## UK + EU

**Netherlands, Werkendam**  
Unique System BV  
T: +31 850 513700  
E: [usbv@uniquegroup.com](mailto:usbv@uniquegroup.com)

**UK, Isle of Wight**  
Unique SeaFlex Ltd  
T: +44 1983 290 525  
E: [buoyancyballast@uniquegroup.com](mailto:buoyancyballast@uniquegroup.com)

**UK, Aberdeen**  
Unique System (UK) Ltd  
T: +44 1224 723742  
E: [abzquotes@uniquegroup.com](mailto:abzquotes@uniquegroup.com)



**UK, Darlington**  
Subsea Innovation  
T: +44 (0)1325 349050  
E: [subsea@uniquegroup.com](mailto:subsea@uniquegroup.com)

**Norway, Husøyvegen**  
Go Subsea  
T: +4790721448  
E: [sales@gosubsea.no](mailto:sales@gosubsea.no)





Mark Lamyman – Business Development Manager

[Mark.Lamyman@Uniquegroup.com](mailto:Mark.Lamyman@Uniquegroup.com) +44 (0)7955285472



# Thank you

PP-004-SUB-001

